



SAPA Contest Information: Whitewater HS January 25, 2025

Facility: 100 Wildcat Way Fayetteville, GA

Emergency Contacts (day of show only)

Stephanie Dennehy: 256-454-0539

Check in: 1 ½ hours before your performance time. Follow signage to check-in area. Each unit will receive armbands for marching members plus 8 extras. Please declare the number of marching members that you have with you that day. If more than 8 extras are needed, they must be purchased for \$12.00 each.

Sound testing: 1 hour before the show and during breaks at the discretion of the sound tech.

All Warmup: Auxiliary Gym (see map) There will be an “A” and “B” area. Please do not use music in warmup. Please be courteous to each other when using a shared warmup space.

Time Line: Time line is **HORIZONTAL**. Enter from the audience’s upper right, exit to the audience’s lower right. Pull floor from back to front.

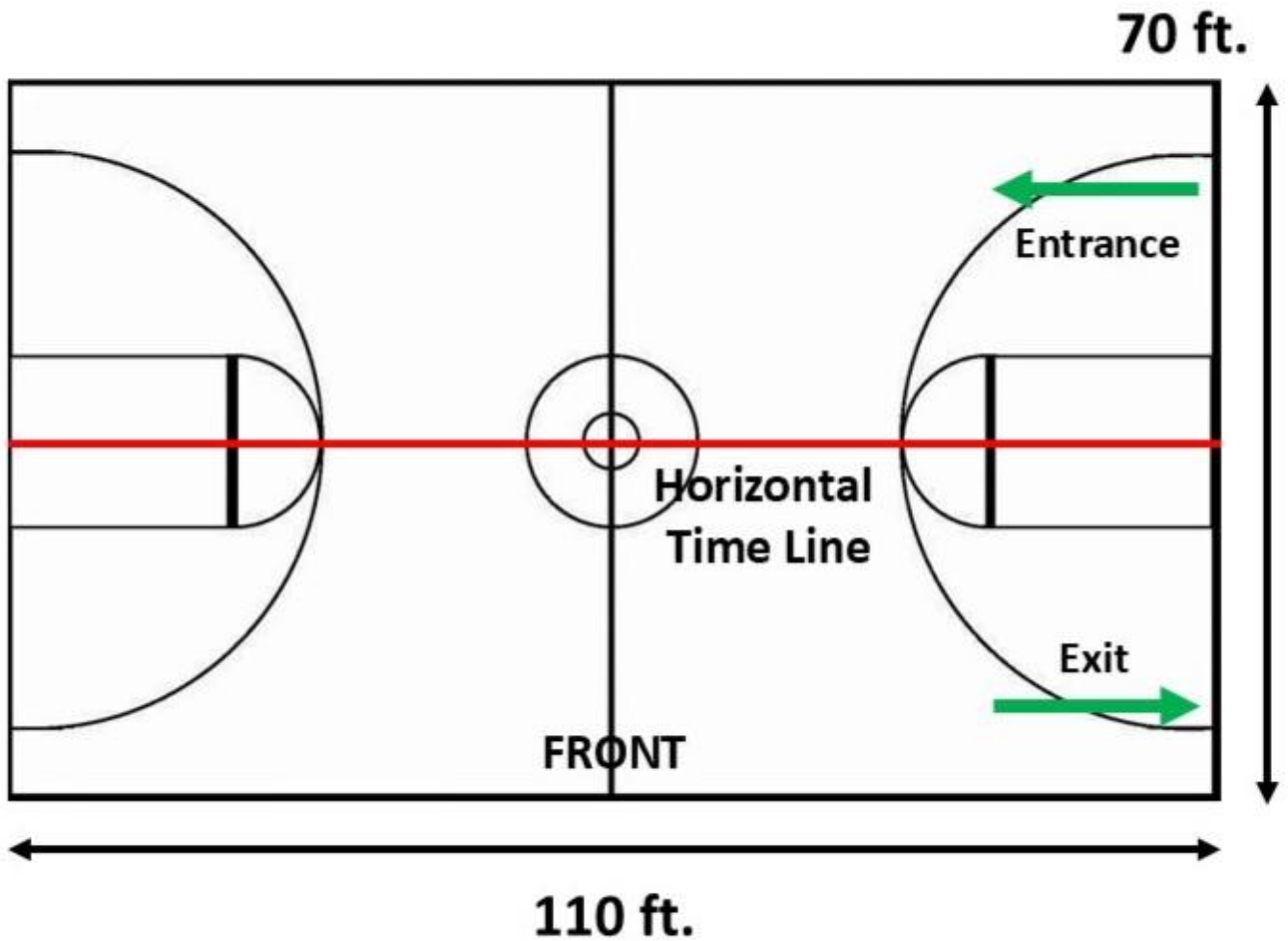
Judge Commentary: You may listen to your judge commentary after your unit’s performance as soon as you receive a notification text from CompetitionSuite. Be sure that your phone number is registered before the show so that you will be able to receive the text.

Backside Seating: Performers should sit on the back side of the gym before and after their performance.

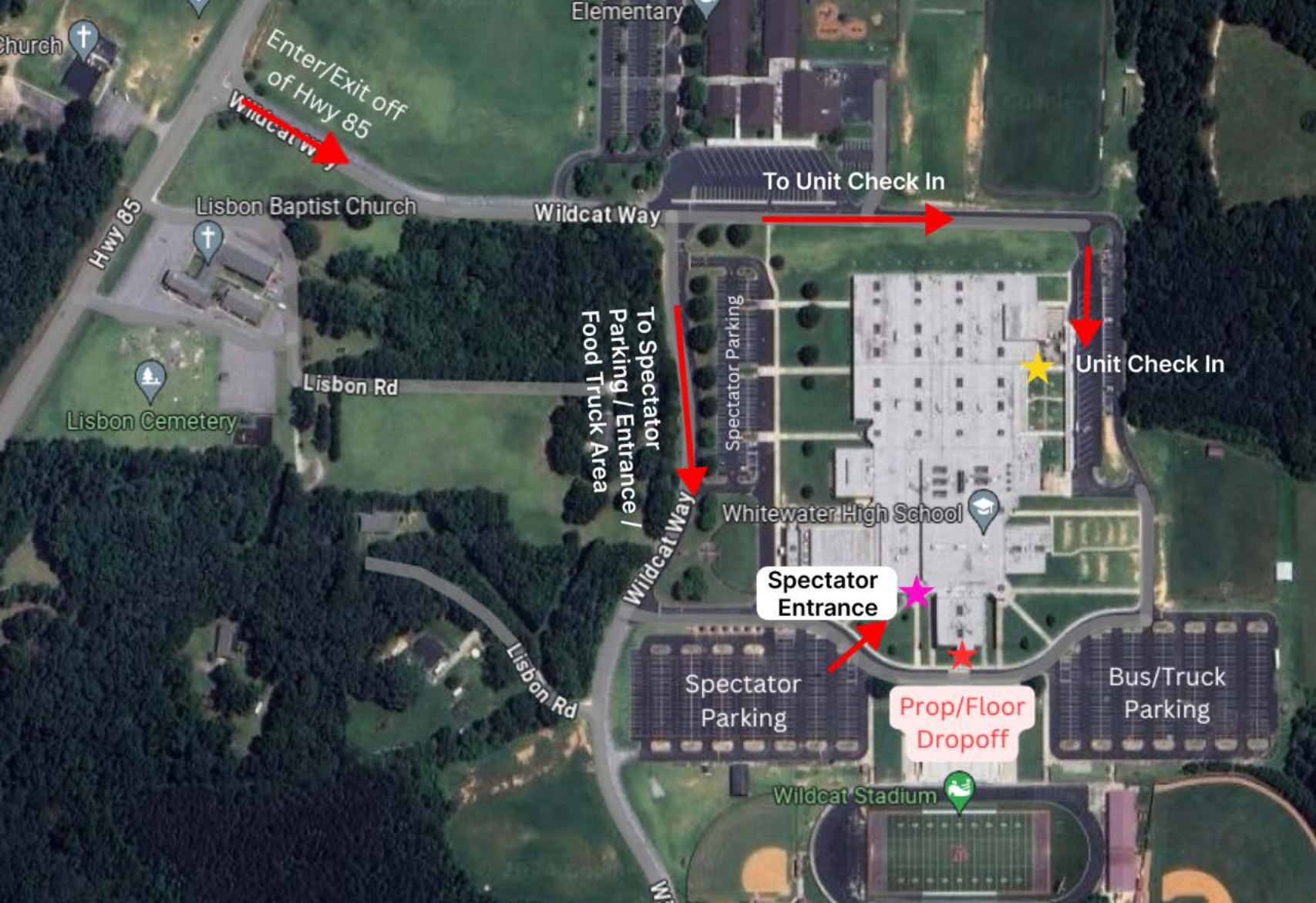
Critique: Media Center (see map)

Director’s Hospitality: FACS Room (see map)

Whitewater High School



**Overhangs at each end. 110' unobstructed
Pull floor from back to front.**



Enter/Exit off of Hwy 85

Wildcat Way

Hwy 85

Lisbon Baptist Church

Wildcat Way

To Unit Check In

Lisbon Rd

Lisbon Cemetery

To Spectator Parking / Entrance / Food Truck Area

Spectator Parking

Unit Check In

Whitewater High School

Spectator Entrance

Spectator Parking

Prop/Floor Dropoff

Bus/Truck Parking

Lisbon Rd

Wildcat Stadium

- ★ Unit Drop Off and Unit Check-in
- ★ Prop/Floor Loading and Unloading Area
- ★ Unit Dressing Areas / Restrooms
- ★ Lower Level Performance Entrance / Exit
- ★ Upper Level Spectator Entrance / Exit
- ★ Director / Staff Hospitality
- Unit Staging Areas

- ★ Concessions / Vendor Area
- ★ Critique
- ★ Judges' Hospitality

