



SAPA Contest Information: Mill Creek HS February 1, 2025

Facility: 4400 Braselton Hwy. Hoschton, GA

Emergency Contacts (day of show only)

Jessica Taylor: 910-233-7354

Check in: 1 ½ hours before your performance time in the commons area. Each unit will receive armbands for marching members plus 8 extras. Please declare the number of marching members that you have with you that day. If more than 8 extras are needed, they must be purchased via GoFan for \$12.00 each.

Sound testing: 1 hour before the show and during breaks at the discretion of the sound tech.

Body Warmup: Band Room (see map)

Equipment Warmup: Auxiliary Gym (see map)

Time Line: Time line is **VERTICAL**. Enter from the audience's lower right, exit to the audience's upper left. Pull floor from right to left.

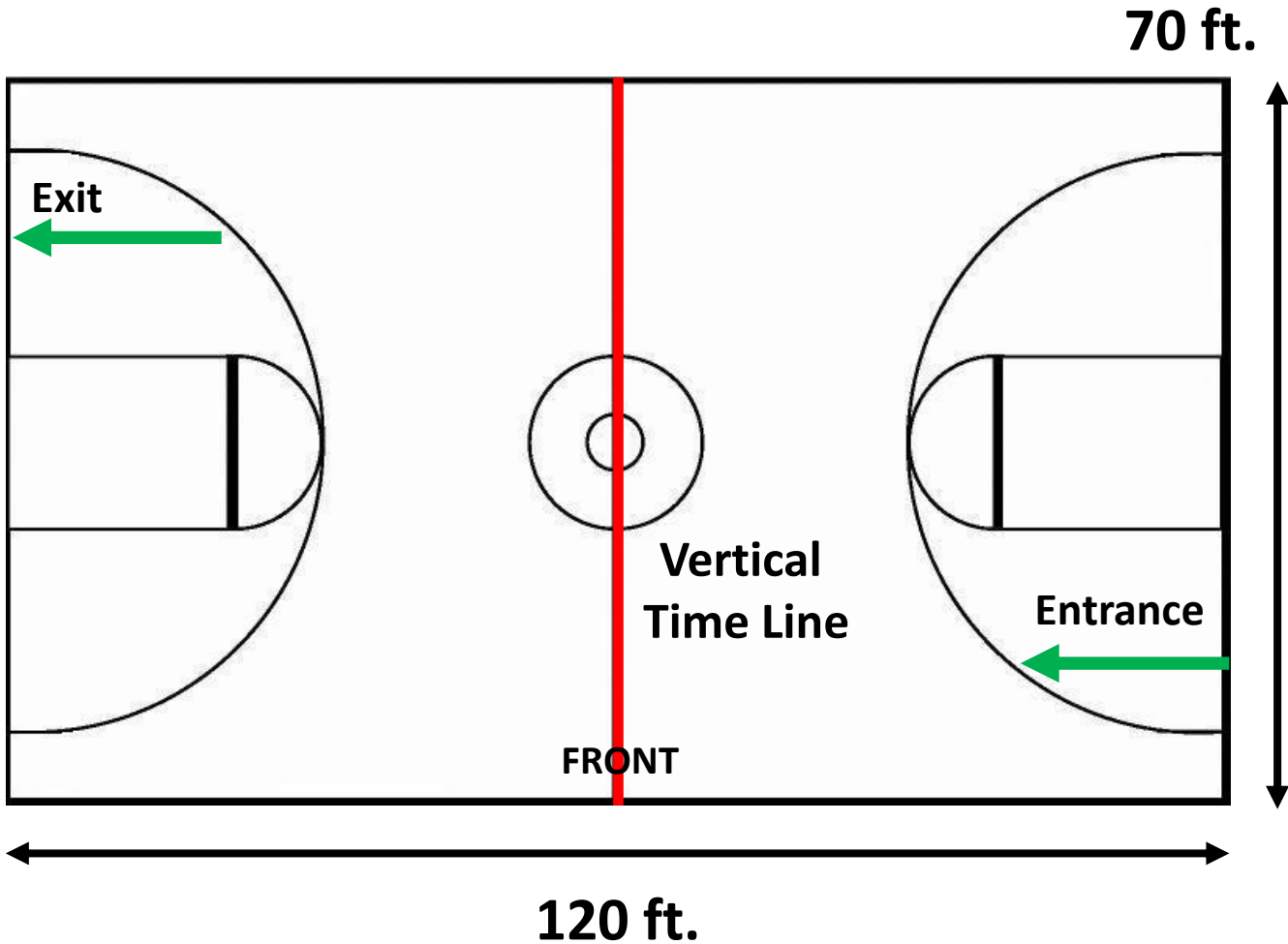
Judge Commentary: You may listen to your judge commentary after your unit's performance as soon as you receive a notification text from CompetitionSuite. Be sure that your phone number is registered before the show so that you will be able to receive the text.

Backside Seating: Performers should sit on the back side of the gym before and after their performance.

Critique: Media Center (see map)

Director's Hospitality: Consumer Science Room (see map)

Mill Creek High School



**No obstructions, overhangs, basketball goals, etc.
Pull floor from right to left**

Mill Creek Community Stadium

Mill Creek High School

UNIT Entrance/Check In

Spectator Entrance

TRUCK/TRAILER & BUS PARKING

SPECTATOR PARKING

Dotted Line = Path to follow to drop off equipment down behind school. Turn onto Pride of Mill Creek Way

Odyssey Children





HOSPITALITY ROOM

TICKET SALES

STAIRS DOWN TO PERFORMANCE



OVERFLOW SEATING

SPECTATOR SEATING

EQUIPMENT WARM UP

Vendor Area

CONCESSIONS

BODY WARM UP AREA

To Parking

UNIT CHECK IN

SPECTATOR ENTRANCE



Prop Entrance

Floor Re-Fold

STAIRS TO WARM UP

Time Line

DRESSING AREAS

JUDGES & SPECTATORS

PERFORMER ENTRY

BASEMENT LEVEL - Floor Level

