



SAPA Contest Information: Etowah HS March 13, 2021

Facility: Etowah High School 6565 Putnam Ford Drive Woodstock, GA

Schedule: Session 1: CAD & SRA Rd1 - 10:00 am Session 2: SRA Rd2 - 1:00 pm

Emergency Contacts (day of show only)

Stephen Long—228-731-5522

Check in: 1 ½ hours before your performance time. **You may not check in earlier than your group's stated time on the logistics schedule.** Each unit will receive armbands for performers, 2 directors plus up to 7 extras if needed. Please declare the number of performers that you have with you that day. **All members of your party must be present and check in together. The director will not be given "loose" wristbands to hand out later.** Each person will be temperature screened before receiving a wristband. Anyone with a temperature above 100.3 will not be allowed into the building. Masks must be worn at all times inside the building. Please see p. 2 of the SAPA Covid-19 Guidelines for guidance on masks/face coverings.

Sound testing: Before the show and during breaks at the discretion of the sound tech. Please upload music to CompetitionSuite. You should have a backup music source available, but CompetitionSuite is the preferred method this season to avoid unnecessary touching of CDs, phones, etc.

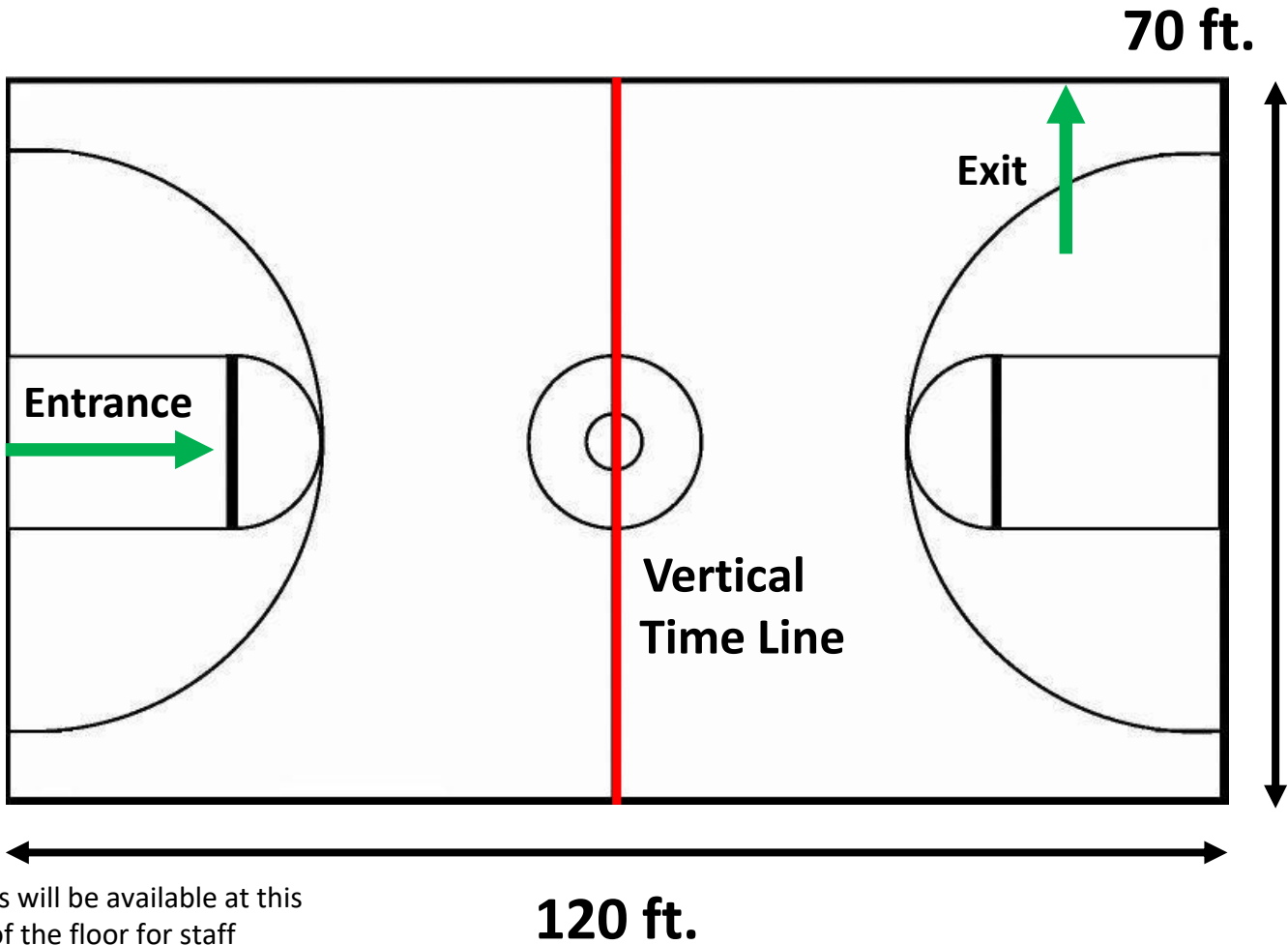
All Warmup: In the Auxillary Gym. There will be an "A" and "B" area. Do not use music in warmup.

Time Line: Time line is **VERTICAL**. Enter from the audience's left, exit to the audience's right. (see map)

Judge Commentary: You may listen to your judge commentary after your unit's performance as soon as you receive a notification text from CompetitionSuite. Be sure that your phone number is registered before the show so that you will be able to receive the text.

- Concession stand will be available for performers and spectators.
- Follow signs to the gym for prop and floor drop off.

Etowah High School



Chairs will be available at this end of the floor for staff seating during your group's performance only

No obstructions, overhangs, basketball goals, etc.

SAPA Contest Information Etowah HS March 13, 2021

Facility: Etowah High School 6565 Putnam Ford Drive
Woodstock, GA 30189

Emergency Contact (Day of show only): Stephen Long (228) 731-5522

Important Screening for all Participants, Spectators, Volunteers, and Staff:

Before arriving on campus, each individual is required to self-screen for the following symptoms:

1. Do you have a fever (100.4 degrees F or higher), or a sense of having a fever (e.g. chills, body aches)?
2. Do you have a positive or pending test result for COVID-19?
3. Do you have a new or worsening cough that you cannot attribute to another health condition?
4. Do you have new or worsening shortness of breath that you cannot attribute to another health condition?
5. Do you have a sore throat that you cannot attribute to another health condition?
6. Do you have a headache that you cannot attribute to another health condition?
7. Do you have a loss of change in your sense of smell or taste?
8. Do you have nausea, vomiting, or diarrhea that you cannot attribute to another health condition?
9. Have you traveled to a COVID-19 Advisory Area in the last 14 days (as defined by the CDC)?

If you answer "Yes" to any of these questions above, do **NOT** attend the competition.

Important Prevention Methods:

- Practice social distancing. Stay at least six feet (about two arms' length) from other people.
- Wear a mask or cloth face covering which covers both nose and mouth when social distancing is **not** possible.
- All event attendees are **required** to wear a mask.
- Remove all belongings/equipment brought in for the competitions.
- Wash your hands frequently with soap and water for at least 20 seconds.
- Use hand sanitizer when handwashing is not possible.
- Cover your cough or sneeze with a tissue, then throw the tissue in the trash and wash your hands.
- Avoid touching your eyes, nose, and mouth.
- Avoid handshaking and other unnecessary person-to-person contact.

It is vital to the success of this event that all performers, coaches, spectators, and volunteers self-screen before arriving on campus. This both ensures the safety of students as well as the smooth execution of competition for all involved.

If ANY person fails screening protocol when arriving on campus, that person will be quarantined until they can depart campus in a designated location.

Check in: 1 ½ hours before your performance time. **You man not check in earlier than your group's stated time on the logistics schedule.** Each unit will receive armbands for performers, 2 directors plus up to 7 extras if needed. Please declare the number of performers you have with you the day of competition. Penalties will be assessed for false declarations. **All members of you party must be present and check in together (This includes performers, coaches, volunteers) The director will not be given "loose" wristbands to hand out later.** Each person will be temperature screened before receiving a wristband. Additional staff must purchase tickets; no one, including equipment crew or chaperones, will be admitted to the gym without a wristband. Anyone with a temperature above 100.3 will not be allowed into the building. Masks must be worn at all times inside the building. Please see p.2 of the SAPA COVID-19 Guidelines for guidance on masks/face coverings.

Sound Testing: Before the show and during breaks at the discretion of the sound tech. Please upload music to CompetitionSuite. You should have a backup music source available, but CompetitionSuite is the preferred method this season to avoid unnecessary touching of CDs, phones, etc.

All Warmup: In the Auxiliary Gym. There will be an "A" and "B" area. Do not use music in warmup.

Time Line: Time line is **Vertical**. Enter from the audience's left, exit to the audience's right. (see map)

Judge Commentary: You may listen to your judge commentary after your unit's performance as soon as you receive a notification text from CompetitionSuite. Be Sure that your phone number is registered before the show so that you will be able to receive the text.

- Vendors are not allowed on our campus per CCSD guidelines.
- Concession will be aviable for spectators.
- Follow signs to the gym for prop and floor drop off.

Face Coverings: Per the official SAPA guidelines, "face coverings are required for all. Please bring your own face coverings and wear them at all times. At this time, based on guidance from health authorities, neck gaiters, open-chin triangle bandanas, and face coverings containing valves, mesh material or holes of any kind are not acceptable face coverings."

Admission Prices: Per the official SAPA guidelines, tickets will be \$12.00 for spectators over the age of five (5). Tickets must be purchased online in advance via GoFan. Tickets will not be available for purchase at the event. Each unit will be allowed to bring seven (7) staff people to the show in addition to the performing members and two (2) directors. Wrist bands are required for all spectators entering the gym, performing members, all staff, as well as for equipment crew and chaperones. Each person will be temperature checked. Anyone with temperature above 100.3 will NOT be allowed into the building.

Seating: Spectators will sit on the side of the gym across from the spectator entrance. Please observe social distancing guidelines and stay at least six (6) feet away from other spectators who are not with your party.

Parking: Spectator parking will be in the student parking lot located next to the gym. Large equipment and floor drop-off are located behind the gym. (signs will be posted)

Equipment Protection and Footwear: Performers must wear shoes at all times when not in the competition area.

Dressing/Storage Facilities: Per the official SAPA guidelines, “group holding areas will be discontinued until further notice.” Please arrive dressed and ready for performance.

Inspection: All additional equipment and props must be protected so as to not damage the floor. Soft-soled shoes need no added protection. Hard-soled shoes must be taped.

Equipment Unloading: Equipment will enter the school through the door to the back hall behind the gym. Tarps and large props will be stored in the lower gym hallway, in order of performance. Please be prepared to have someone with your equipment at this time. You will be allowed to unload your equipment one hour prior to your performance and must reload as soon as performance is over. Equipment crew must check in with the unit and get screened before unloading equipment.

Judging Area and Commentary: Please do not enter either area or communicate with judges. You may listen to your judge commentary after your unit’s performance as soon as you receive a notification text from CompetitionSuite. Be sure that your phone number is registered before the show so that you will be able to receive that text.

Sound table: A sound system will be provided by SAPA. A representative should stay with the SAPA sound person during your performance. You should have a clearly labeled back-up recording. Sound checks should be done prior to the show, or, on a limited basis, during breaks and will take place at the sound table. Volume is controlled by SAPA.

Time Line: We will have a vertical time line. From the judge's perspective, units will enter from the left side and exit to the right rear. The floor will be pulled from the back to the front and from the left to the right. Upon entry, you may pull the floor to the halfway point, and then await notification from the timing judge to proceed.

Warm-Up Area: Warm-ups will be in the Auxiliary Gym. NO music is allowed during warmups. Please see enclosed map for location. **Practice is not allowed elsewhere in the building.** Weather permitting, warm-ups can be done outside. Due to safety concerns, NO PRACTICE IS ALLOWED IN THE PARKING LOT OF THE SCHOOL.

Floor Refolding: Floor refolding may be done outside next to the gym. Per the official SAPA guidelines, "indoor floor folding will be discontinued until further notice."

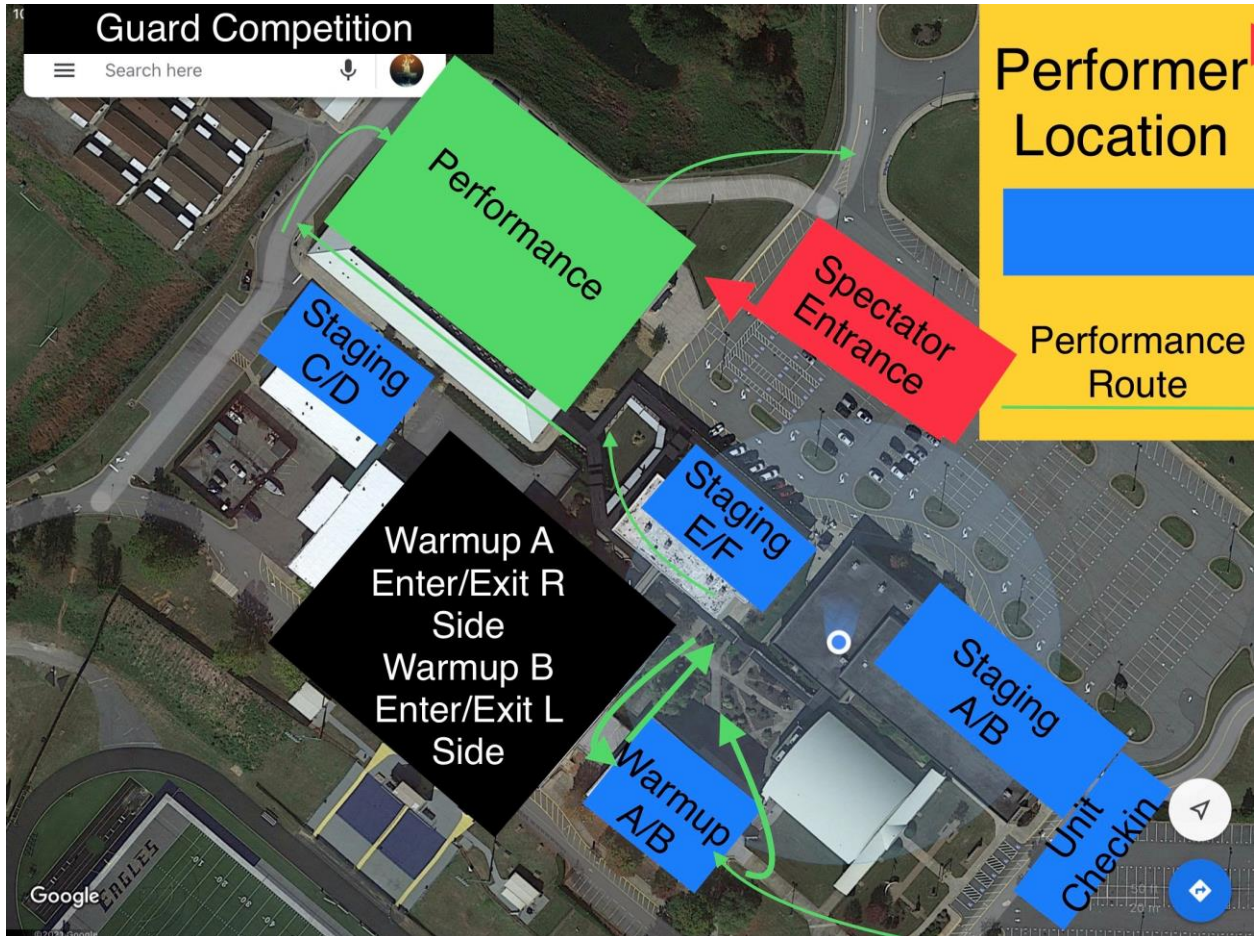
First Aid: Located near general admission on the upper level.

Director's Hospitality: Unfortunately, due to COVID restrictions, this benefit is not allowed to be held at this event.

Concessions: The concession stand will have many items available to purchase during the event. The concession stand is in the gym lobby nearest to the spectator seating. NO OUTSIDE FOOD WILL BE PERMITTED. No cash will be accepted considering COVID protocols at CCSD schools. Please plan to pay with a credit card.

Scores and Recaps: Score and recaps will be posted to the SAPA website short after the last performance.

Video Taping: Due to copyright restrictions, there will be no recording of performing units. Please do not try to video tape other units or from the stands.



Vendor Area Space: Due to CCSD COVID protocols, there will not be any vendors on our campus this year. We look forward to offering this again next season.

Hospitals:

Northside Hospital 10 miles 450 Northside Cherokee Blvd Canton, GA 30114 770-224-1000	Wellstar Kennestone Hospital 12 miles 677 Church St NE Marietta, GA 30060 770-793-5000
--	---

Minute Clinic:

CVS 9:00 AM – 5:30 PM 7 miles 6120 Hickory Flat Hwy Canton, GA 30115 770-720-0610	CVS 9:00 AM – 5:30 PM 4 miles away 1600 Towne Lake Pkwy Woodstock, GA 30189 770-517-1022
--	---

Once again, welcome to Etowah High School. We hope our contest meets your expectations in every way. Best wishes to our competing units!