

Art of the Warrior

Lakeview-Fort Oglethorpe High School
Saturday, March 10, 2018
1850 Battlefield Pkwy
Ft. Oglethorpe, GA 30742

WELCOME

The Lakeview-Ft. Oglethorpe Band Boosters, Band and Guard would like to welcome you to LFO High School. We are happy to have you here in our new facility and we hope you enjoy your time in North Georgia. Best of luck to all competing units!

CONTACTS

If you have any questions not addressed in the packet please feel free to contact us.

Before the day of the show, contact Ashley Wagner, LFO Guard Director at lfoguard@gmail.com, awagner.lfo@catoosa.k12.ga.us, or 407-595-4534.

EMERGENCY CONTACTS (DAY OF SHOW ONLY)

Lori McNelly 423-305-1012

Debra Levin 423-240-5141

PARKING- UNIT AND SPECTATOR

- Unit parking for buses/equipment will be located in the Battlefield Primary Lot. This is marked on the map and attendants will be posted.
- Units will drop off at unit check in and buses will continue on to park.
- Spectator parking may be accessed from the main entrance of LFO. You must pull past the light (exit only) and turn in to the left off Battlefield Parkway. Signs will be posted.

ADMISSION AND TICKETS

- Admission cost is \$9.
- Wristbands may be purchased at the entrance to the PERFORMANCE GYM.
Signs will be posted.
- Children under 5 will be admitted free of charge.
- SAPA badges will be honored for admission purposes.

UNIT CHECK-IN

- Registration and check-in will begin at **10:00 am**. Unit registration is located on the 100 hallway, straight ahead of the main entrance drive. **Performing members and staff must check-in together.** Be prepared to declare the number of performing members. Penalties will be assessed for false declarations. Wristbands for performing members and 7 additional bands will be provided. Additional members and staff must purchase wristbands. Only persons with wristbands will be allowed into equipment unloading areas, warm-up areas and performance areas. Units must check-in at least one hour prior to performance time.
- All units will be assigned a volunteer guide to ensure safety of the unit and their timing of movement throughout the school.
- Personal storage areas will be provided in the school hallways as assigned upon arrival. Please leave areas as neat and cleans as when you arrived. Valuable personal items should not be left in the hallways and are the unit's responsibility. There will be restrooms available in each hallway.

PLEASE DO NOT SPIN ANY EQUIPMENT IN THE HALLWAYS.

EQUIPMENT LOADING/UNLOADING

Equipment loading and unloading will take place at the back of the school at the end of the 500 hall.

- We ask that you be prepared to unload your equipment, but we will have volunteers on hand to help you.
- Equipment storage will be in the designated areas. Floors and props will be lined up in performance order.
- Be prepared to have someone with your props and floor at least 15 minutes before your performance.
- Immediately following your performance, please re-load your equipment.
- Follow signs/map to re-enter after unloading equipment.

EQUIPMENT SPECIFICATIONS

Equipment specifications include, but are not limited to, the following:

- 60' x 90' performance area
- No performers may enter the "safety zone" at any time during their performance
- Props and equipment, including equipment tips of rifles, poles, pikes, and sabres as well as PVC pipes, must be padded and taped so they will not damaged the floor (even if a floor covering is used).
- All props must be in the designated competition area and no equipment choreography should take place outside the competition area.
- Floor carts may be used.
- Performers must wear shoes at all times when not in the competition area. (Note: Penalties will be assessed for violation of this rule) Any hard-soled shoes must be taped.
- All performers must begin within the designated competition area.
- Inspection will be located in the warm-up area.

TABULATION AND JUDGING AREA

These areas are strictly off limits to everyone except authorized personnel. Comments are made available via Competition Suite. DO NOT APPROACH THE TABULATION TABLE.

PERFORMANCE FACILITY AREAS/GUIDELINES

SOUND TABLE

- A CD player will be provided for unit use or you use a personal iPod or MP3 player to plug into the SAPA sound system. If you are playing music off your phone it is advised to set your phone on airplane mode.
- You may also upload your music to Competition Suite
- CLEARLY LABELED performance CDs should be brought to the sound table prior to the performance.
- A unit representative should stay with the SAPA sound technician during their unit's performance.
- Sound checks should be done prior to the show, or on a limited basis, during breaks.
- Volume is controlled by SAPA.

TIMELINE

- This event will have a VERTICAL TIMELINE.
- Units will enter from the timeline on the audience's upper right and exit from the audience's upper left.

WARM-UP AREAS

- BODY WARM-UP will be located in the CAFETERIA. Equipment use is not allowed in the body warm-up area.
- EQUIPMENT WARM-UP will be located in the AUXILLARY GYM.

FLOOR FOLDING

- Floor folding will be done in the parking lot outside of the performance gym.
- In the event of inclement weather it will be done in the cheer room

FIRST AID

- First aid will be located in the hallway behind the performance gym.

CONCESSIONS

- The concession area will be open in the lobby of the performance gym. There will be a variety of food and drinks for your enjoyment.
- There is a pre-order form at the end of this packet. If you would like to pre-order for your unit please send completed forms to lfoguard@gmail.com by 2:00 pm, March 9th.

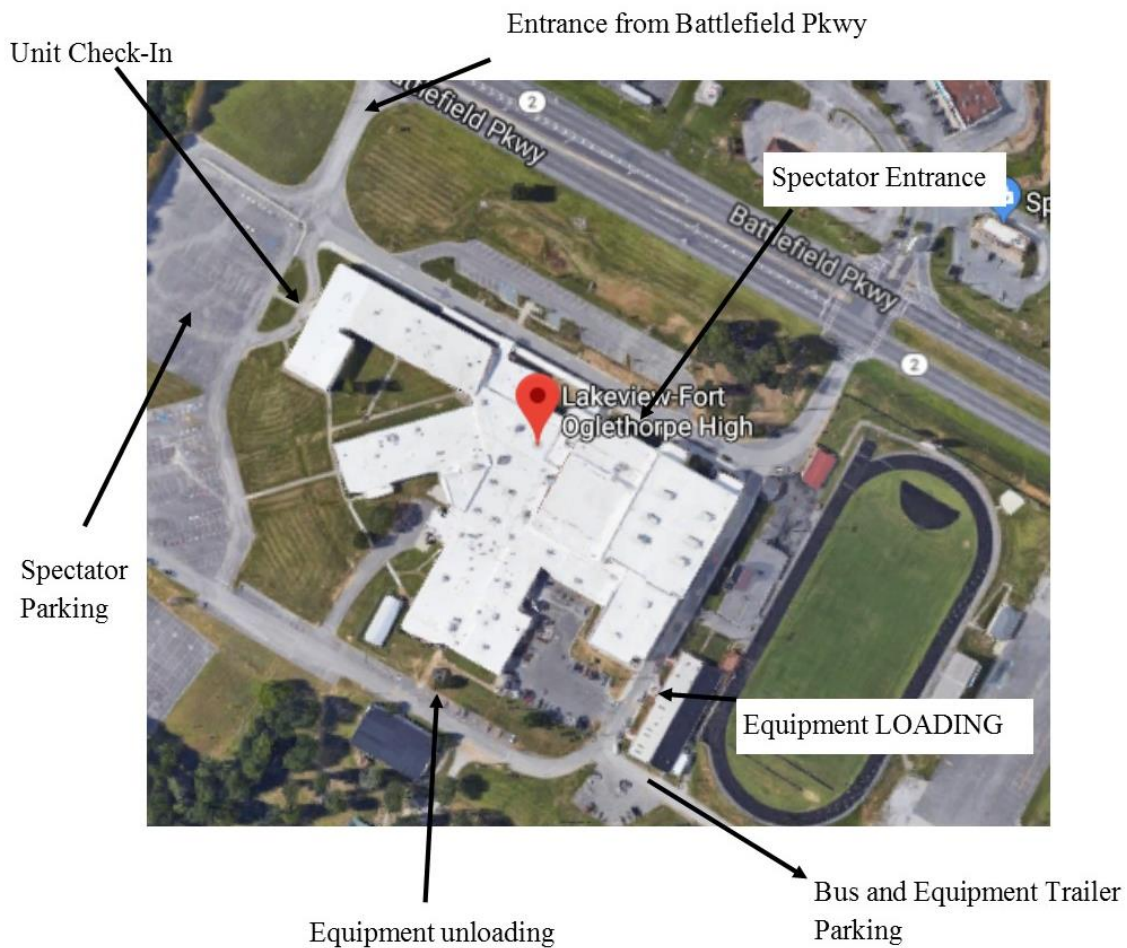
SHOW MERCHANDISE

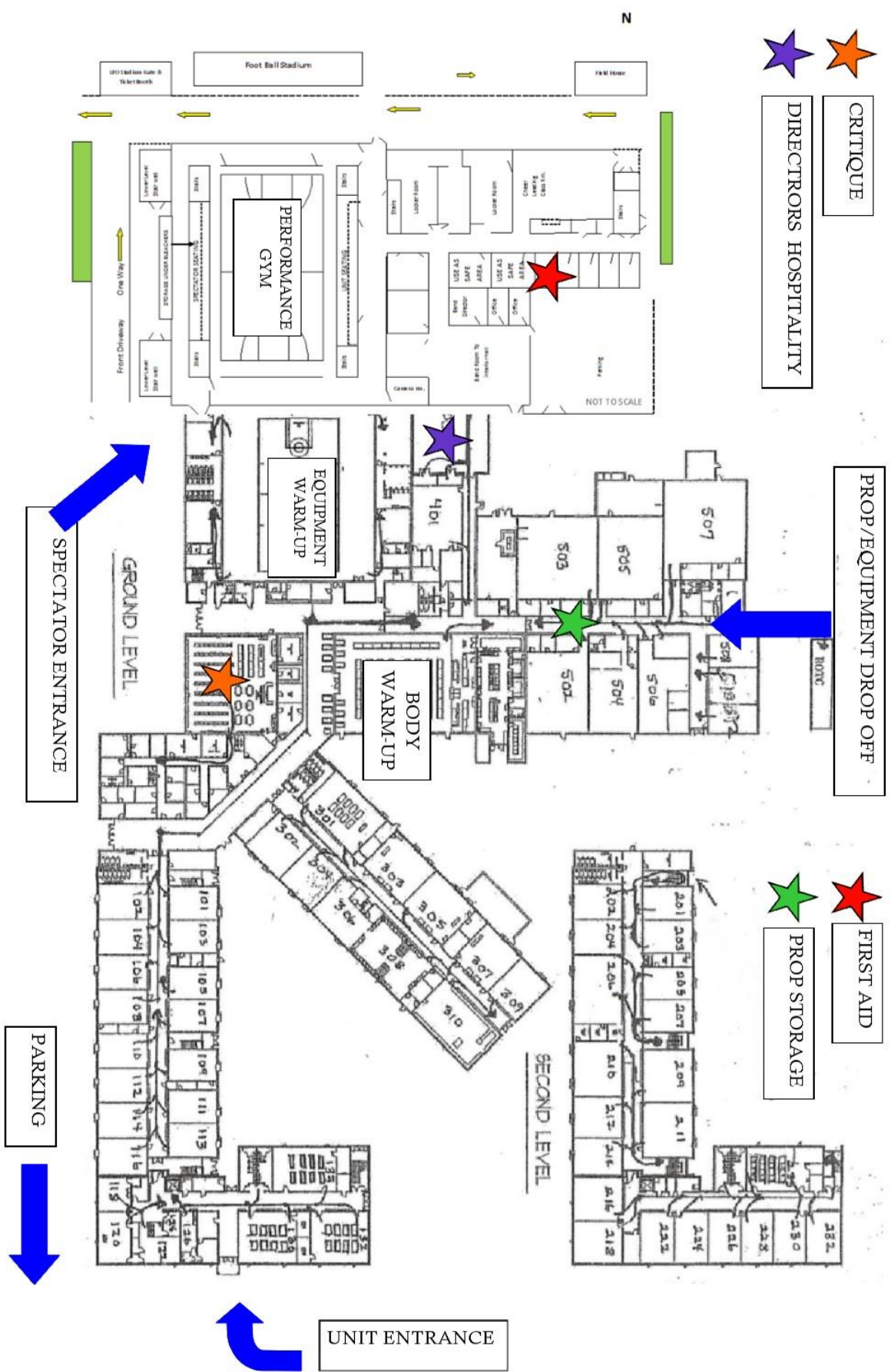
- Art of the Warrior event shirt with unit names \$15 (S-XL)
- Art of the Warrior souvenir program (includes fan favorite voting) \$3
- Carnations \$3
- Guard Grams \$1
- Spirit Pops \$0.50

DIRECTIONS/MAPS

- From I-75 Northbound
 - Take exit 350, Battlefield Pkwy
 - Turn left at exit and follow for 5 miles
 - School will be on your left. Go past stoplight at shopping center with Planet Fitness to turn in.
- From I-75 Southbound
 - Take exit 350, Battlefield Pkwy
 - Turn right at exit and follow for 5 miles
 - School will be on your left. Go past stoplight at shopping center with Planet Fitness to turn in.

LFO Parking map





DIRECTORS HOSPITALITY

CRITIQUE

PROP/EQUIPMENT DROP OFF



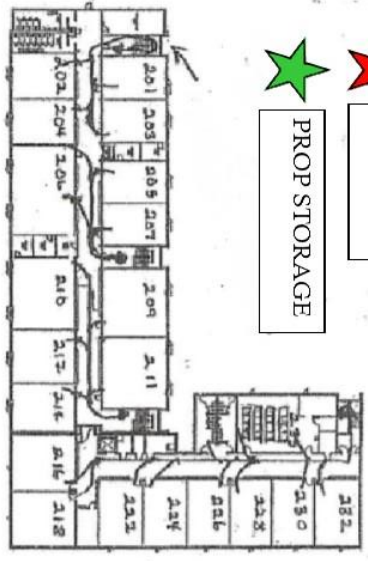
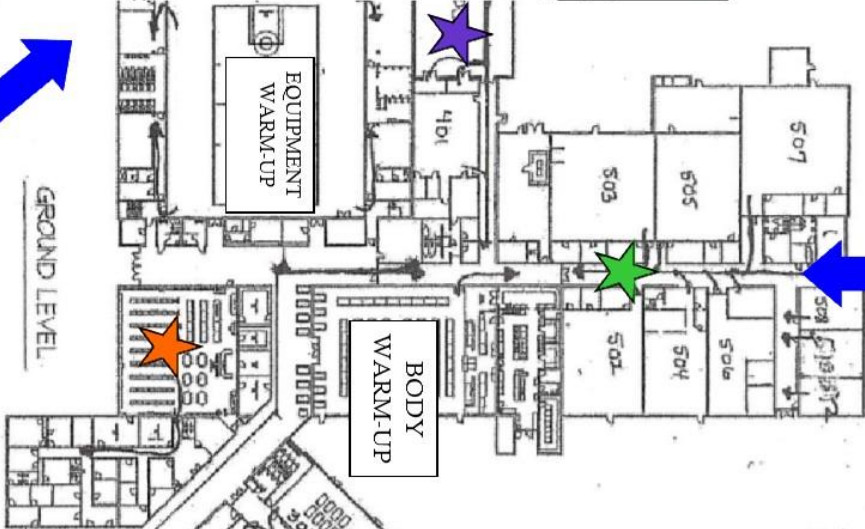
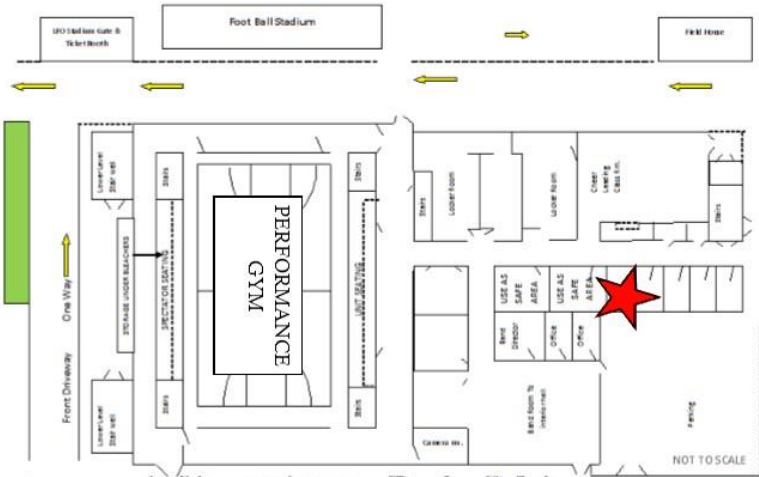
FIRST AID

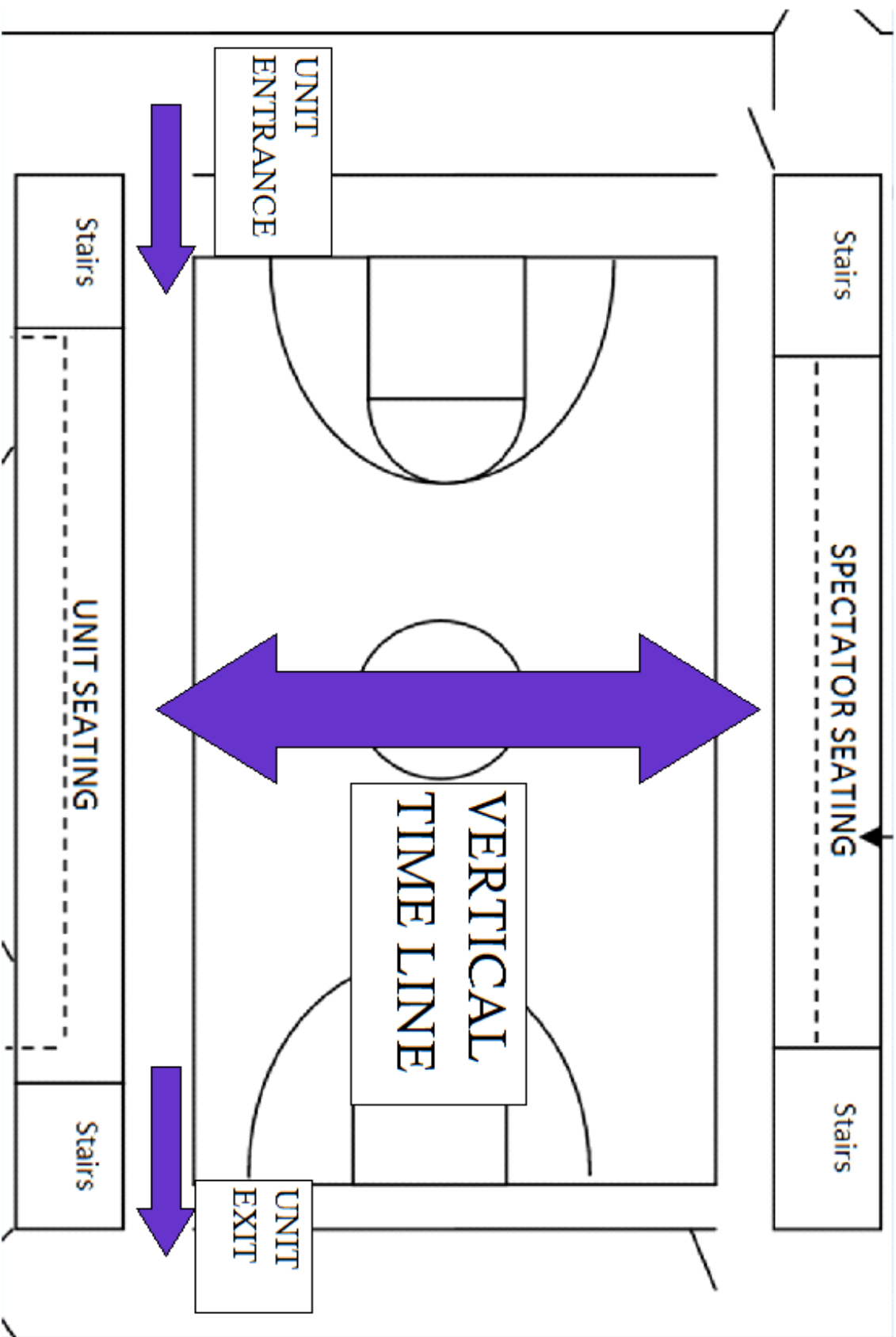
PROP STORAGE

SPECTATOR ENTRANCE

PARKING

UNIT ENTRANCE





Concessions Order Form

___ Hot Dog \$2

___ Hamburger \$3

___ Nacho w/cheese \$2

___ Chicken Nuggets \$1

___ Veggie Boats \$2

___ Walking Tacos \$3

Sides

___ Fruit cups \$2

___ Fries \$1

___ Pickles \$1

___ Popcorn \$1

___ Chips \$1

Sweets

___ Fried Oreos 4/\$3

___ Assorted candy \$1

Drinks

___ Coke products 12oz \$1

___ Bottled water \$1

___ Coffee \$1

___ Hot Chocolate \$1

_____ Pick-up time

Special instructions: Please specify varieties for soda, chips or candy below. We will do our best to accommodate.

Please have payment ready at check-in. Checks can be made to LFO Band Boosters.

AREA INFORMATION

HOSPITALS/MEDICAL CENTERS

- Cornerstone Medical Center, 100 Gross Crescent, Fort Oglethorpe, GA 30742
- Parkridge East Hospital, 941 Spring Creek Rd, Chattanooga, TN 37412
- American Family Care, Urgent Care, 26th St, Ft. Oglethorpe, GA 30742 (Battlefield Pkwy)

SERVICE GARAGES

- Wal-Mart Supercenter, 3040 Battlefield Pkwy, Ft. Oglethorpe, GA 30742

GAS STATIONS

- Wal-Mart Supercenter, 3040 Battlefield Pkwy, Ft. Oglethorpe, GA 30742
- Costco Wholesale, 100 Cobb Pkwy, Ringgold, GA 30736 (Exit 353)
- Numerous down Battlefield Pkwy from I-75 to LFO

GENERAL MERCHANDISE

- Wal-Mart Supercenter, 3040 Battlefield Pkwy, Ft. Oglethorpe, GA 30742
- Lowe's Home Improvement, 2215 Battlefield Pkwy, Ft. Oglethorpe, GA
- The Home Depot, 2055 Battlefield Pkwy, Ft. Oglethorpe, GA 30742
- Costco Wholesale, 100 Cobb Pkwy, Ringgold, GA 30736