



## **SAPA Contest Information: Mill Creek HS March 23, 2019**

**Facility:** 4400 Braselton Highway Hoschton, GA

**Schedule:** Cadet-SRA begins at - 10 AM SA-IO begins at- 4:15 PM

**Emergency Contacts (day of show only)**

Erik Mason: 770-367-2243

**Check in:** 1 ½ hours before your performance time. Each unit will receive armbands for marching members plus 7 extras. Please declare the number of marching members that you have with you that day. If more than 7 extras are needed, they must be purchased for \$9.00 each.

**Sound testing:** 1 hour before the show and during breaks at the discretion of the sound tech.

**Body Warmup:** In the Band Room (see map)

**Equipment Warmup:** In the Auxiliary Gym (see map)

**Time Line:** Time line is **VERTICAL**. Enter from the lower right, exit to the upper left. (see map)

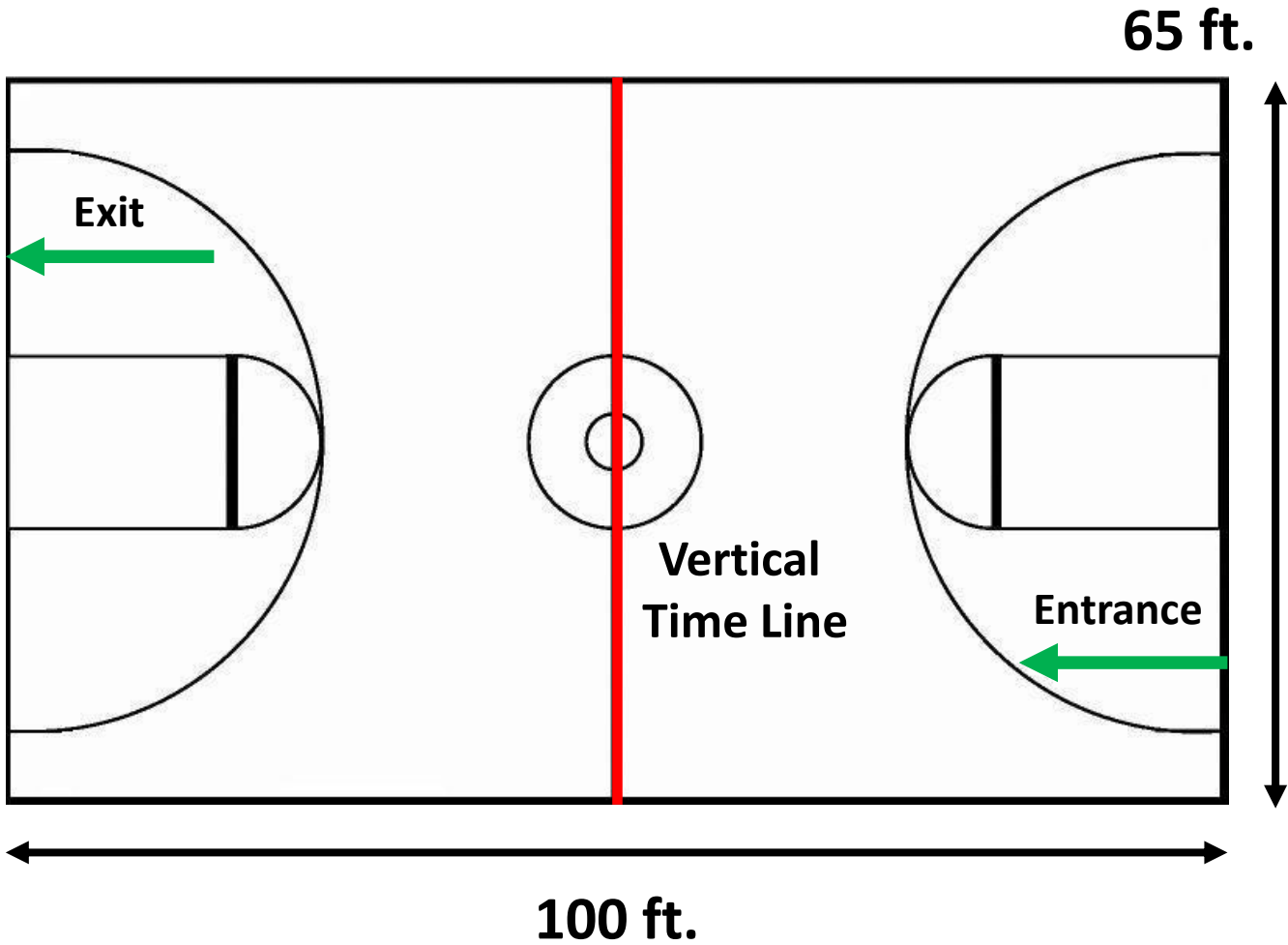
**Judge Commentary:** You may listen to your judge commentary after your unit's performance as soon as you receive a notification text from CompetitionSuite. Be sure that your phone number is registered before the show so that you will be able to receive the text.

**Critique:** In the Media Center. Sign up for critique on CompetitionSuite before the last performance.

**Director's Hospitality:** Located in the FCS Room. Follow the signs. Please wear your SAPA badge for admission.

- Vendors and a fully stocked concession stand will be available for performers and spectators.

# Mill Creek High School



**No obstructions, overhangs, basketball goals, etc.**

# The Mill Creek Winter Classic

Saturday, March 23, 2019  
Hosted by MILL CREEK HIGH SCHOOL  
4400 Braselton Highway  
Hoschton, GA 30548

## Dear Director:

Thank you for choosing the Mill Creek Winter Classic Competition held at Mill Creek High School. Please familiarize yourself with the following information that you will find helpful during the contest. If you have any questions or concerns, please contact the MCHS Band Director, Erik Mason at erik\_mason@gwinnett.k12.ga.us

## CONTEST TIME

The contest is scheduled for Saturday, March 23, 2019. The contest will begin at 10:00 a.m. Unit check-in and parking will be open at 8:30 a.m.

## EMERGENCY CONTACT NUMBER (Day of the show)

Erik Mason (770)367-2243

**CHECK-IN:** Shown on the enclosed map. Be prepared to declare the number of marching members. Penalties will be assessed for false declarations. Marching members and seven staff will be admitted. Additional members and staff must purchase tickets. Units must check in at least one hour prior to performance time. **Unit members and Staff must check in together.**

**DRESSING FACILITIES:** Available on-site. Please vacate ASAP after performance. Please do not leave valuable personal items in the dressing area. Please leave the dressing area as clean and neat as when you arrived.

**FOOTWEAR AND EQUIPMENT PROTECTION:** All equipment tips on rifles, pikes, and sabers must be taped (including PVC pipes). Any props used must be protected as not to damage the floor (no floor covering is used). Percussion equipment must be on rollers and unit must not drag timpani pedals on the floor. Soft soled shoes need no added protection. Hard soled shoes must be taped. **Shoes must be worn at all times with the exception of the performance.**

**EQUIPMENT UNLOADING & STORAGE:** All equipment will be unloaded in the designated areas. There will be equipment storage in the designated areas. The areas are identified on the enclosed map. *Please reload all equipment as soon as your performance is over.*

**FLOOR SIZE:** The floor area is 65 x 100 feet. Please see the SAPA handbook for rules and policies regarding the performance space.

**FLOOR REFOLDING:** Floor refolding will take place in the parking area straight out of the exit from the performance area.

**TABULATING AND JUDGING AREAS:** These areas are off limits to everyone except authorized personnel. Comments are made available via Competition Suite.

**SOUNDTRACKS:** A CD player will be provided for your use or you may utilize your own device and plug it into the system provided. Bring CDs to the sound table prior to your performance. Sound checks will be done at the designated time(s) at the sound table. **Volume is controlled by SAPA. A representative of your unit should stay with the Sound Technician during your performance.**

**SCORES AND RECAPS:** Are available through Competition Suite.

**AWARDS:** Top 3 in each class or class round.

**CRITIQUE:** Critiques will be located in the media center. Guides and signs will be available to assist in locating the Media Center

**ADMISSION:** SAPA policy is that each unit will receive seven (7) staff admissions in addition to the marching members and the two (2) director badges supplied by SAPA. Per SAPA guidelines, admission will be \$9.00. Upon payment you will be given a wristband which must be worn around the wrist and visible for admission to the gym.

**VIDEOTAPING:** There is to be no videoing.

**WARM-UP AREAS/TIME LINE:** We will have a vertical time line. Enter from the audience's right, exiting to the audience's left. The Warm up areas are designated on the map.

**HOSPITALITY:** Our hospitality room will be available in the FCS room throughout the contest. This room will be open to Directors and Staff ONLY as identified by their respective badges. We will be serving hot food, drinks and snacks. Signs will be posted to assist in finding this location.

**CONCESSIONS:** The Concession area will be open throughout the competition with a wide variety of food and drinks available for your enjoyment.

#### **FIRST AID**

First aid is available at the unit check-in area Local EMTs are aware of the contest and are on-call if we have any medical needs. If you have a first aid need, please contact a Staff Member immediately so that appropriate action can be taken. If you have any questions, please contact us prior to the contest. During the contest, in addition to the Directors, your Unit host and contest staff should be able to assist you with your questions.

Erik Mason  
Director of Bands

# MCHS Campus Map

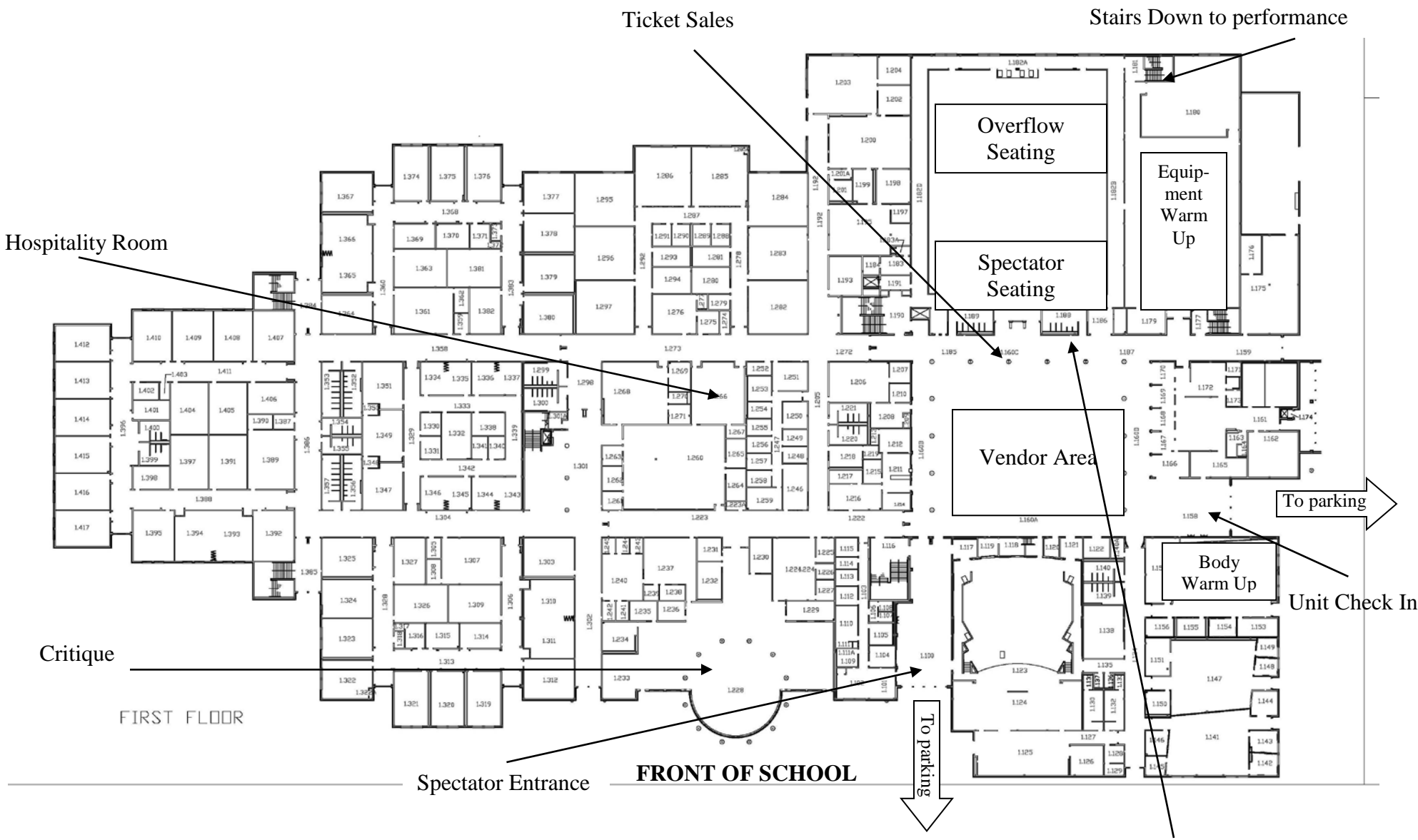
Floor Refolding

Color Guard Trailer Load / Unload



Spectator Parking

# Color Guard Flow – 1<sup>st</sup> Floor



# Color Guard Flow - Main Floor

