



SAPA Contest Information: Lakeview-Fort Oglethorpe HS January 19, 2019

Facility: Lakeview-Fort Oglethorpe High School 1850 Battlefield Pkwy. Fort Oglethorpe, GA

Schedule: Cadet-SRA begins at - 11 AM SA-IO begins - 3:30 PM

Emergency Contacts (day of show only)

Valerie Camargo: 615-545-6229

Debra Levin: 423-240-5141

Check in: 1 ½ hours before your performance time. Each unit will receive armbands for marching members plus 7 extras. Please declare the number of marching members that you have with you that day. If more than 7 extras are needed, they must be purchased for \$9.00 each.

Sound testing: 1 hour before the show and during breaks at the discretion of the sound tech.

Body Warmup: In the Cafeteria

Equipment Warmup: In the Auxiliary Gym

Time Line: Time line is **VERTICAL**. Enter from the audience's right, exit to the audience's left. (see map)

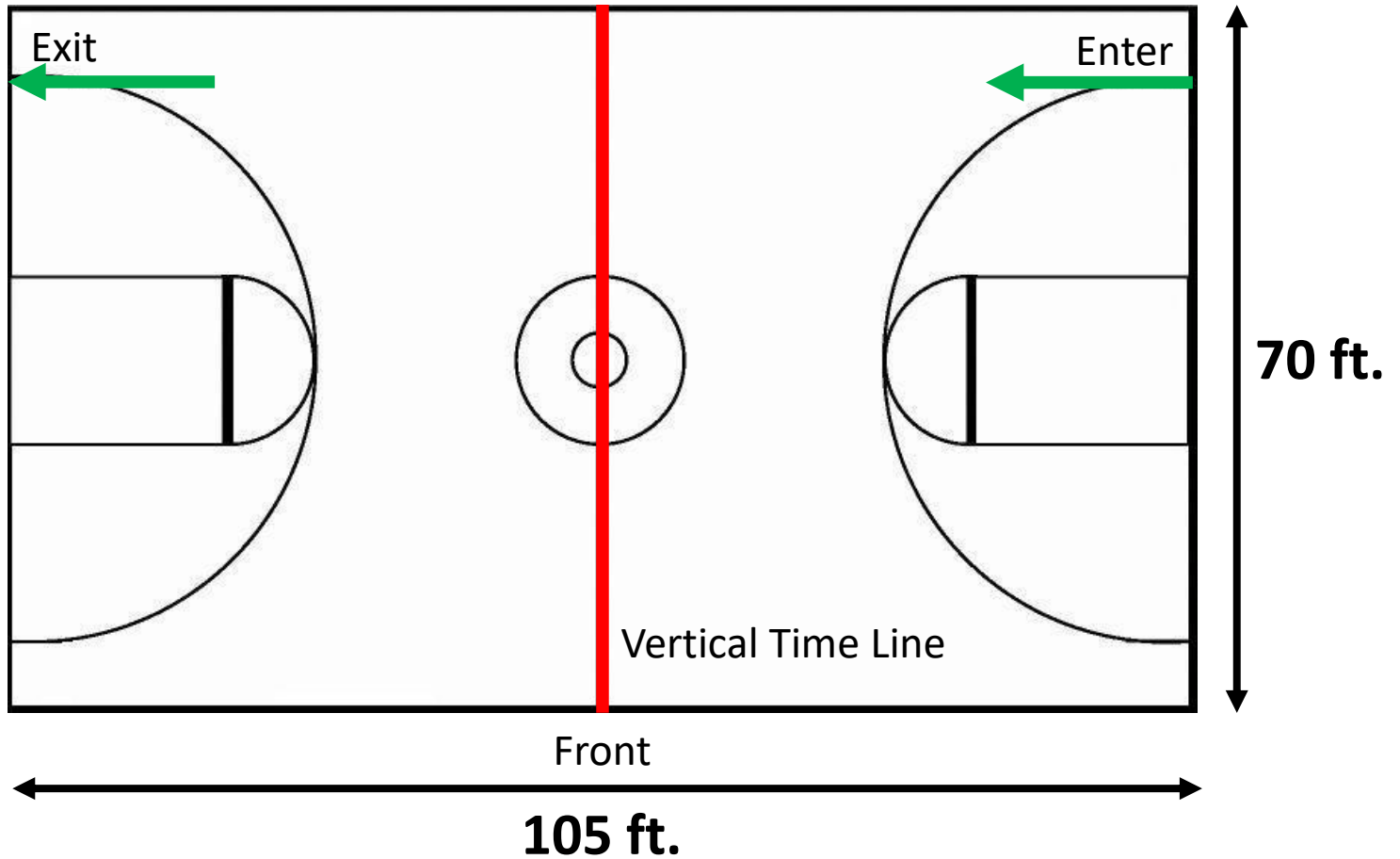
Judge Commentary: You may listen to your judge commentary after your unit's performance as soon as you receive a notification text from CompetitionSuite. Be sure that your phone number is registered before the show so that you will be able to receive the text.

Critique: In the Media Center. Be sure to sign up for critique on CompetitionSuite.

Director's Hospitality: In the Choir Room. Please wear your SAPA badge for admission.

- Concessions and vendors will be available for performers and spectators.
- Follow signs for prop and floor drop off.

LFO High School



No obstructions, overhangs, basketball goals, etc.

Art of the Warrior

Lakeview-Fort Oglethorpe High School
Saturday January 19,2019
Lakeview-Fort Oglethorpe High School
1850 Battlefield Pkwy
Ft. Oglethorpe, GA 30742

CONTACTS

If you have any questions not addressed in the packet please feel free to contact us.

Before the day of the show, contact Ashley Wagner, LFO Guard Director at lfoguard@gmail.com, awagner.lfo@catoosa.k12.ga.us, or 407-595-4534.

EMERGENCY CONTACTS (DAY OF SHOW ONLY)

Valerie Camargo 615-545-6229

Debra Levin 423-240-5141

PARKING- UNIT AND SPECTATOR

- Unit parking for buses/equipment will be located in the Battlefield Primary Lot. This is marked on the map and attendants will be posted.
- Units will drop off at unit check in and buses will continue on to park.
- Spectator parking may be accessed from the main entrance of LFO. You must pull past the light (exit only) and turn in to the left off Battlefield Parkway. Signs will be posted.

UNIT CHECK-IN

- Registration and check-in will begin at **9:00 am**. Unit registration is located on the 100 hallway, straight ahead of the main entrance drive. **Performing members and staff must check-in together.** Be prepared to declare the number of performing members. Penalties will be assessed for false declarations. Wristbands for performing members and 7 additional bands will be provided. Additional members and staff must purchase wristbands. Only persons with wristbands will be allowed into equipment unloading areas, warm-up areas and performance areas. Units must check-in at least 1 ½ hour prior to performance time.
- All units will be assigned a volunteer guide to ensure safety of the unit and their timing of movement throughout the school.
- Personal storage areas will be provided in the school hallways as assigned upon arrival. Please leave areas as neat and cleans as when you arrived. Valuable personal items should not be

left in the hallways and are the unit's responsibility. There will be restrooms available in each hallway.

PLEASE DO NOT SPIN ANY EQUIPMENT IN THE HALLWAYS.

EQUIPMENT LOADING/UNLOADING

Equipment loading and unloading will take place at the back of the school.

- We ask that you be prepared to unload your equipment, but we will have volunteers on hand to help you.
- Equipment storage will be in the designated areas. Floors and props will be lined up in performance order.
- Be prepared to have someone with your props and floor at least 15 minutes before your performance. Props/floors will be in the hallway between body warm up and equipment warm up. Props/floors will move before or with you through equipment warm up to holding.
- Immediately following your performance, please re-load your equipment.
- Follow signs/map to re-enter after unloading equipment.

EQUIPMENT SPECIFICATIONS

Equipment specifications include, but are not limited to, the following:

- 60' x 90' performance area
- No performers may enter the "safety zone" at any time during their performance
- Props and equipment, including equipment tips of rifles, poles, pikes, and sabres as well as PVC pipes, must be padded and taped so they will not damage the floor (even if a floor covering is used).
- All props must be in the designated competition area and no equipment choreography should take place outside the competition area.
- Floor carts may be used.
- Performers must wear shoes at all times when not in the competition area.

TIMELINE

- This event will have a VERTICAL TIMELINE.
- Units will enter from the timeline on the audience's upper right and exit from the audience's upper left.

WARM-UP AREAS

- BODY WARM-UP will be located in the CAFETERIA. Equipment use is not allowed in the body warm-up area.
- EQUIPMENT WARM-UP will be located in the AUXILIARY GYM.

FLOOR FOLDING

- Floor folding will be done in the parking lot outside of the performance gym.

- In the event of inclement weather it will be done in the cheer room

FIRST AID

- First aid will be located in the hallway behind the performance gym.

CONCESSIONS

- The concession area will be open in the lobby of the performance gym. There will be a variety of food and drinks for your enjoyment.

SHOW MERCHANDISE

- Art of the Warrior event shirt with unit names \$15 (S-2XL)
- Art of the Warrior souvenir program (includes fan favorite voting) \$1
- Carnations \$3
- Guard Grams \$1
- Spirit Pops \$0.50

DIRECTIONS/MAPS

- From I-75 Northbound
 - Take exit 350, Battlefield Pkwy
 - Turn left at exit and follow for 5 miles
 - School will be on your left. Go past stoplight at shopping center with Planet Fitness to turn in.
- From I-75 Southbound
 - Take exit 350, Battlefield Pkwy
 - Turn right at exit and follow for 5 miles
 - School will be on your left. Go past stoplight at shopping center with Planet Fitness to turn in.
- LFO Parking map

