



SAPA Contest Information: Etowah HS March 2, 2019

Facility: Etowah High School 6565 Putnam Ford Drive Woodstock, GA

Schedule: Cadet-NOV begins at - 11 AM SRA-SA begins at - 2:30 PM

Emergency Contacts (day of show only)

Stephen Long—228-731-5522

Check in: 1 ½ hours before your performance time. Each unit will receive armbands for marching members plus 7 extras. Please declare the number of marching members that you have with you that day. If more than 7 extras are needed, they must be purchased for \$9.00 each.

Sound testing: 1 hour before the show and during breaks at the discretion of the sound tech.

Body Warmup: In the Cafeteria (see map)

Equipment Warmup: In the Auxiliary Gym (see map)

Time Line: Time line is **VERTICAL**. Enter from the audience's left, exit to the audience's right. (see map)

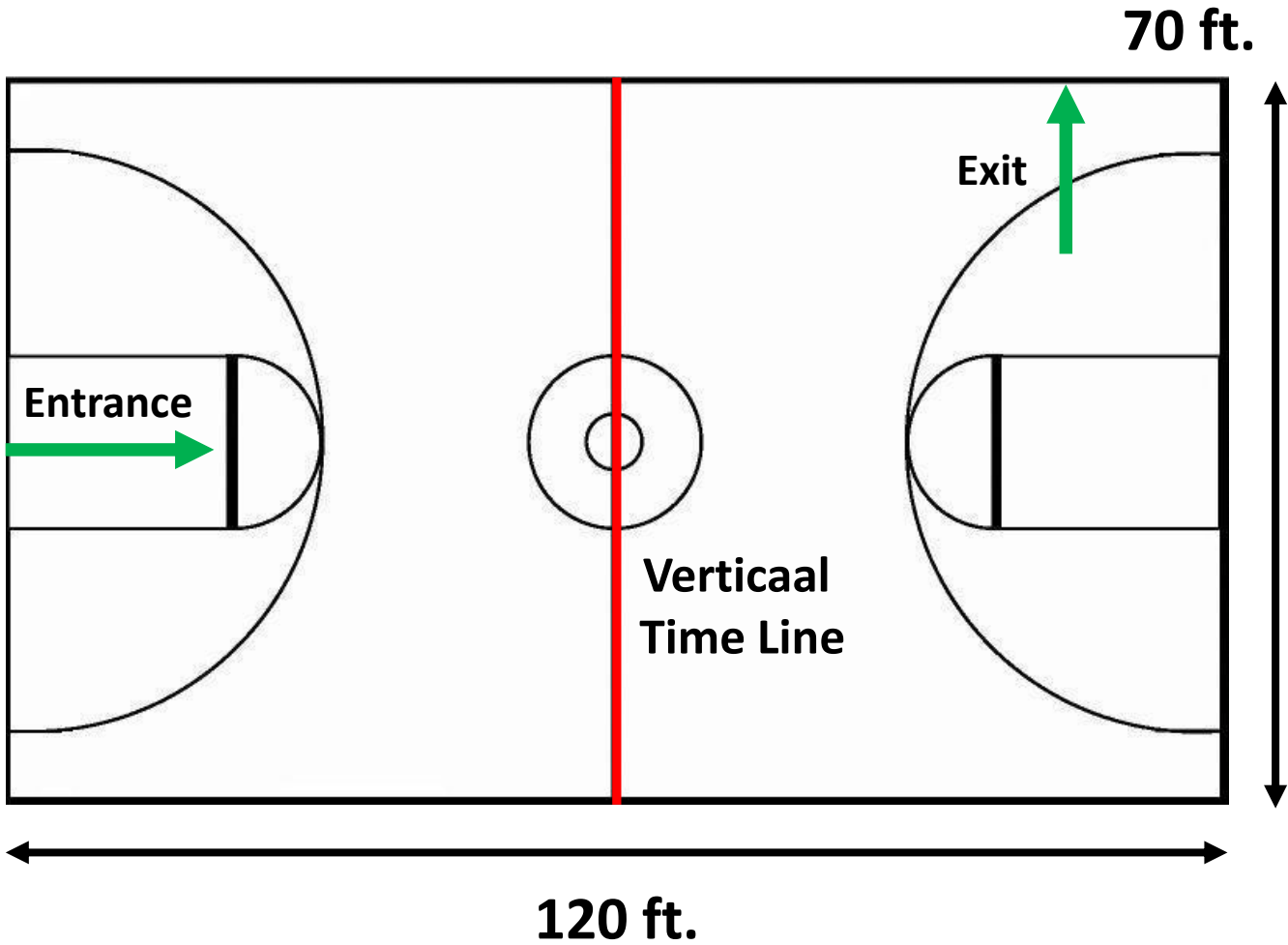
Judge Commentary: You may listen to your judge commentary after your unit's performance as soon as you receive a notification text from CompetitionSuite. Be sure that your phone number is registered before the show so that you will be able to receive the text.

Critique: In the Media Center. Be sure to sign up for critique on CompetitionSuite.

Director's Hospitality: In the Choir Room. Please wear your SAPA badge for admission.

- Vendors and a fully stocked concession stand will be available for performers and spectators.
- Follow signs to the gym for prop and floor drop off.

Etowah High School



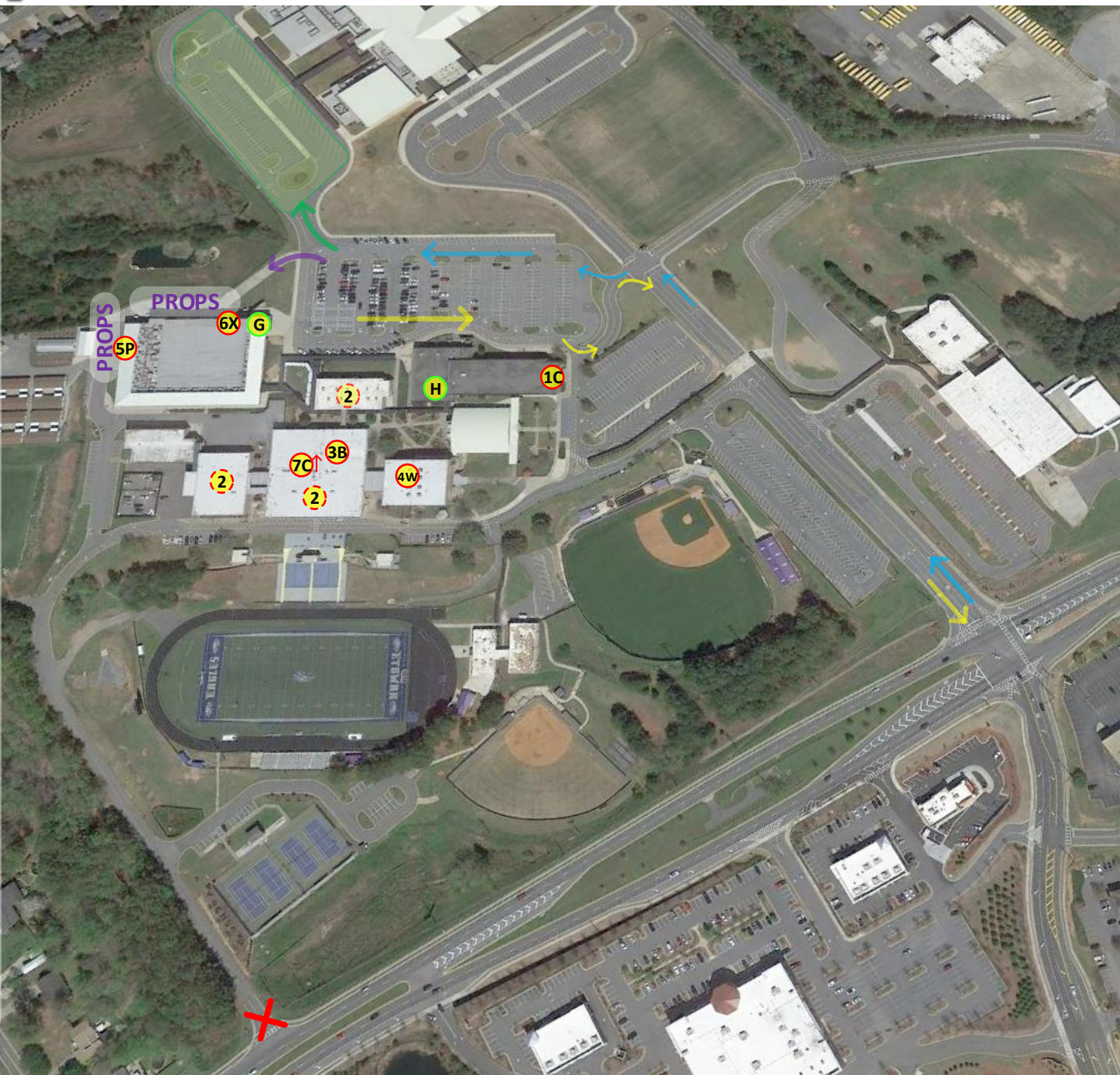
No obstructions, overhangs, basketball goals, etc.



2019 ETOWAH HIGH SCHOOL



SITE OVERVIEW



- Enter
- Exit
- Big Vehicles
- Prop Drop Off

- Hospitality
- Gym Entrance
- Unit Check In
- Unit Ready Areas
- Body Warm Up (Cafeteria)
- Warm Up (Old Gym)
- Prop \ Performer Entrance
- Exit from floor
- Critique post-awards (2nd flr - Media Center)

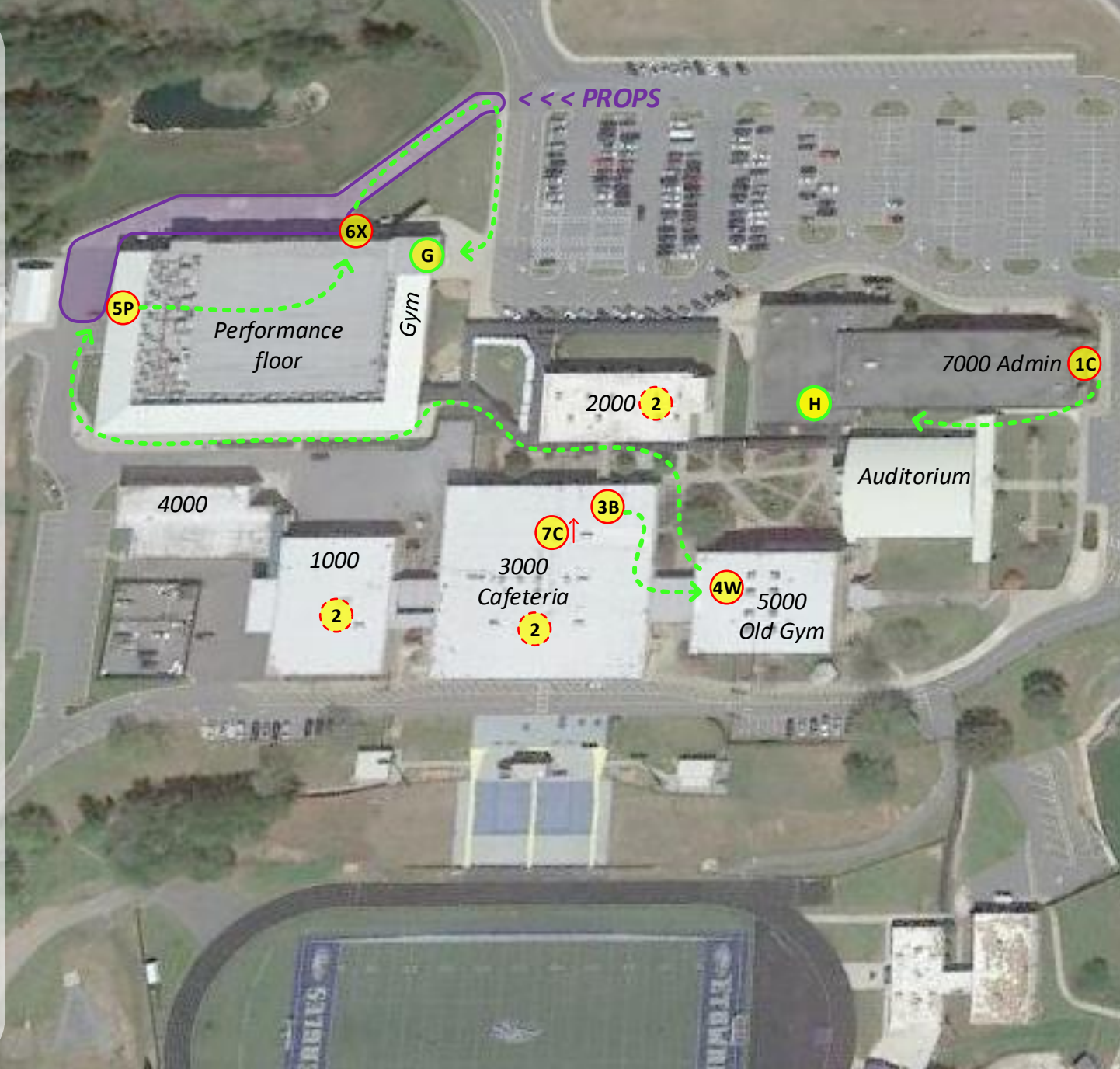










2019 EAGLE MOUNTAIN WINTER GUARD



SITE MAP



-  Prop Drop Off
-  Hospitality
-  Gym Entrance
-  Unit Check In
-  Unit Ready Areas
-  Body Warm Up (Cafeteria)
-  Warm Up (Old Gym)
-  Prop \ Performer Entrance
-  Exit from floor
-  Critique post-awards (2nd flr - Media Center)



SCAN FOR SITE MAPS

