



**Chattahoochee High School  
Winter Guard Games  
Welcome Packet**

**Saturday, March 31, 2018  
Chattahoochee High School  
5230 Taylor Rd. Johns Creek GA, 30022**

# WELCOME PACKET • March 31 2018

## WELCOME

Welcome to the Chattahoochee High School WinterGuard Games! We hope you find this packet helpful. We appreciate your patronage at this event. Shall you ever need any assistance, please see a contest host member in a yellow shirt.

## CONTACTS

This WELCOME PACKET should answer most, if not all, of your questions about this event and the Hooch Campus. However, if you need additional information, please feel free to contact one of the following people:

Show Coordinator		
Leesa Robertson	<a href="mailto:Leesarobertson@gmail.com">Leesarobertson@gmail.com</a>	407-921-9067
Chattahoochee High School Band Director		
Nick Garofalo	<a href="mailto:garofalon@fultonschools.org">garofalon@fultonschools.org</a>	404-514-2928
Chattahoochee High School Guard Director		
Marcus Onezime	<a href="mailto:marbrocus14@yahoo.com">marbrocus14@yahoo.com</a>	470-234-9821

## VENDORS

Space is at a premium at our facilities. Therefore, vendor rentals will be *extremely* limited with pricing equalling \$100 per area. Vendors interested in renting a space, should contact the Show Coordinators for details.

## MAPS

Maps provided with this packet include:

- School Location Map
- Directions to the Hooch Campus
- Hooch Campus Maps and Event Flow Diagrams

## PARKING – UNIT AND SPECTATOR

**UNIT PARKING FOR BUSES/EQUIPMENT** will be in the last parking lot as you pass the school. It is the 3<sup>rd</sup> entrance to the school. Follow the signs that you lead you to the stadium. It is the entrance after the “flag pole” turn around.

**SPECTATOR PARKING** is located at the first entrance to the school. Please turn left onto the school campus, and then immediately right. Park where you wish. Proceed to the large entrance by the Flag Pole and two story entrance area listed on the map.

## ADMISSION AND TICKETS

- Admission cost is \$9.
- Tickets may be purchased at the entrance to the MAIN GYM as well as the ATRIUM(see enclosed map).
- Children under 5 will be admitted free of charge.

# WELCOME PACKET • March 31 2018

## SEATING

Seating will be available on a “first come, first serve” basis on the FRONT side of the gym as well as the sides. After their performances, units are asked to sit on the back side of the gym to allow for sufficient spectator seating on the front side of the gym. Spectators will be allowed to enter/exit the gym between unit performances only.

## VIDEOTAPING

No video taping will be permitted.

## HOSPITALITY ROOMS

The Judges’ and Directors/Staff Hospitality Rooms is located in the “B HALL” directly off the main hallway.

## UNIT CHECK-IN

**UNIT CHECK-IN** will begin 1 ½ HOURS BEFORE THE FIRST PERFORMANCE TIME on the day of the event in the **YOU WILL CHECK IN NEAR THE UNIT PARKING AREA. THERE WILL BE SIGNS CLEARLY MARKING WHERE YOU MAY CHECK YOUR GROUP IN. FLOOR CHECK IN WILL OCCUR AFTER YOU CHECK IN WITH YOUR MEMBERS. FLOORS WILL BE CHECKED IN WITH ASSISTANCE FROM A STUDENT GUIDE. YOU WILL RETRIEVE YOUR FLOOR AT THE ENTRANCE TO THE GYM.**

Units will need to provide the following at time of registration:

- Number of guard members (Note: Penalties will be assessed for false declarations.)
- Unit Spiel Sheets should be completed on-line prior to the competition.
- Unit members and staff should check in together. Immediately following check in, you will receive a student guide.

Units will be provided with the following at time of registration:

- Staff/Chaperone passes (7 free; Extras are \$9)

Unit Dressing Facilities will be available on-site and should be vacated as soon as possible after performance. Valuable personal items should not be left in the dressing area and are the unit’s responsibility. Personal Storage areas will be provided in the school hallways as assigned upon arrival.

## EQUIPMENT LOADING AND UNLOADING

Equipment unloading and loading will take place near the rear entrance to the gymnasium in designated areas.

- Equipment unloading procedures and routes to/from performance/warm-up areas will be reviewed at registration as last minute changes may be necessary.
- WEATHER PERMITTING, floors and props will be lined up in performance order along the lower level hallway leading into the gymnasium performance area.
- PLEASE BE SURE TO BRING TARPS TO COVER FLOORS/PROPS IN CASE OF INCLEMENT WEATHER.
- Be prepared to have someone with your props and floor at least 10 minutes before your performance.
- Immediately following your performance, please plan to re-load your equipment.

## EQUIPMENT SPECIFICATIONS

Equipment specifications include, but are not limited to, the following:

- The maximum allowable tarp size for any unit is 60' x 90'. The site will have a minimum of 65'x100' to accommodate a "safety zone" of 3' on both sides and back using the minimum competition area of 60'x90'.
- No performers may enter the "safety zone" any time during their performance.
- For the purposes of interpretation, the "competition area" shall measure a minimum of 60'x90' and does not include entry ramps, hallways nor any bleachers or seating area. Units are allowed to utilize the entire designated competition area for their performance.
- Props and equipment, including equipment tips on rifles, pikes and sabers as well as PVC pipes, must be taped and padded such that they will not damage the floor (even if a floor covering is used).
- All props must be in the designated competition area and no equipment choreography should take place outside the competition area.
- Floor carts may be used.
- Performers must wear shoes at all times when not in the competition area. (Note: Penalties will be assessed for violation of this rule.) Any hard-soled shoes must be taped.
- All performers must begin within the designated competition area.

## PERFORMANCE FACILITY AREAS / GUIDELINES

### SOUND TABLE:

- A CD player will be provided for unit use.
- Units may also use an I-pod (or MP3 player) to plug into the SAPA sound system.
- CLEARLY-LABELED PERFORMANCE CDs should be brought to the SOUND TABLE prior to a performance.
- Units should ensure they also have a CLEARLY-LABELED BACK-UP RECORDING.
- A unit representative should stay with the SAPA soundperson during their unit's performance for this event.
- Sound checks should be done prior to the show or, on a limited basis, during breaks.
- Volume is controlled by SAPA.

### TIMELINE:

- This event will have a **HORIZONTAL TIME LINE**.
- Units will enter from the TIME LINE audience's lower left side (on the FRONT side of the gym) and will exit from the audience's upper left side (on the BACK side of the gym).

### WARM-UP AREAS:

- **BODY WARM-UP** will be located in the **Wrestling Room** in the main gym lower hallway. Equipment use IS ALLOWED in the Body Warm-Up area; however, the area is small.
- **EQUIPMENT WARM-UP** will be located in the **Auxiliary gym** adjacent to the MAIN GYM.

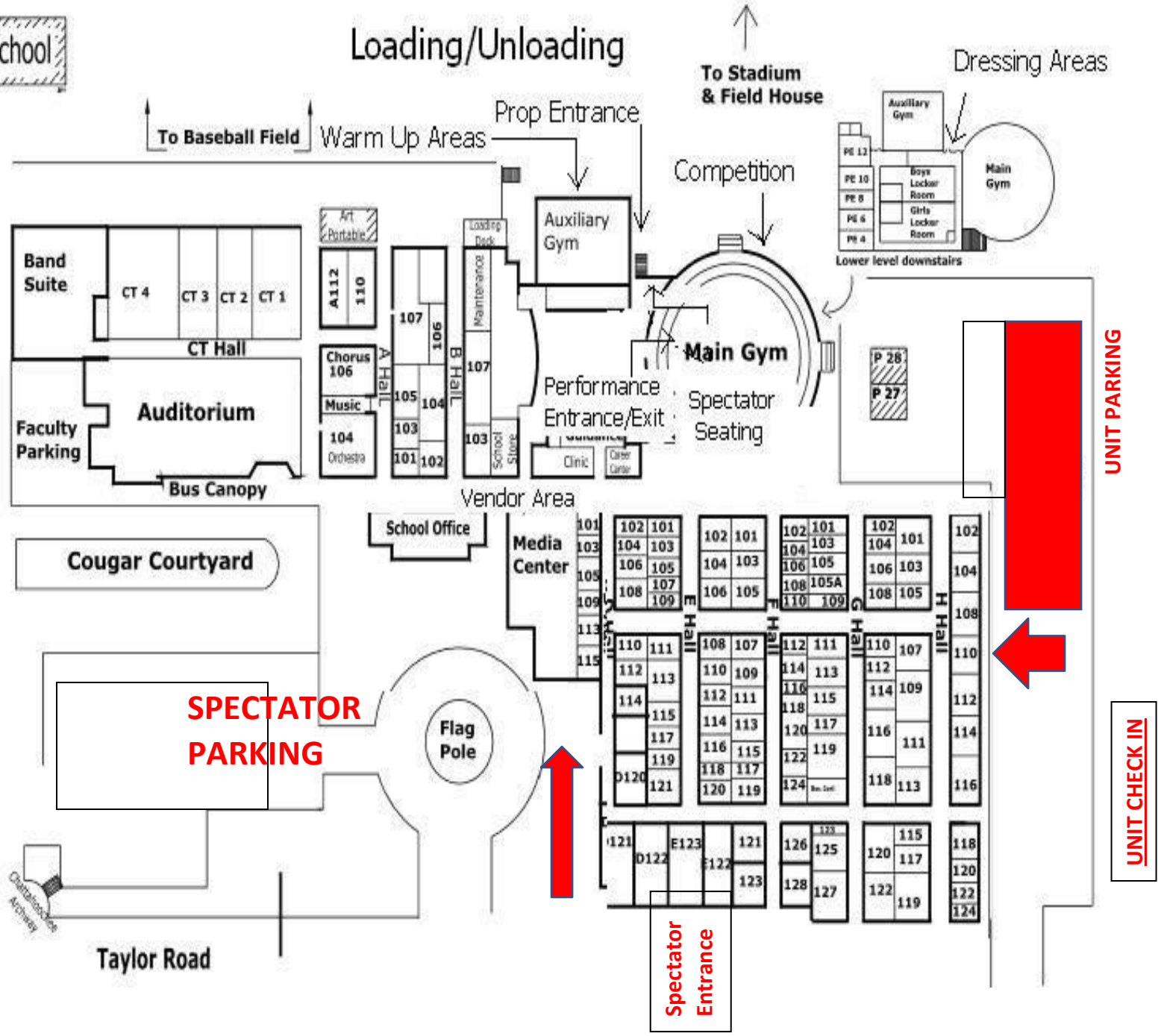
### FLOOR FOLDING:

- Floor folding will be done outside the performance gym in the parking lot near the pavilion.
- In case of inclement weather, floor folding will be done in the Hooch aux gym and/or after the show and/or during breaks.

### FIRST AID:

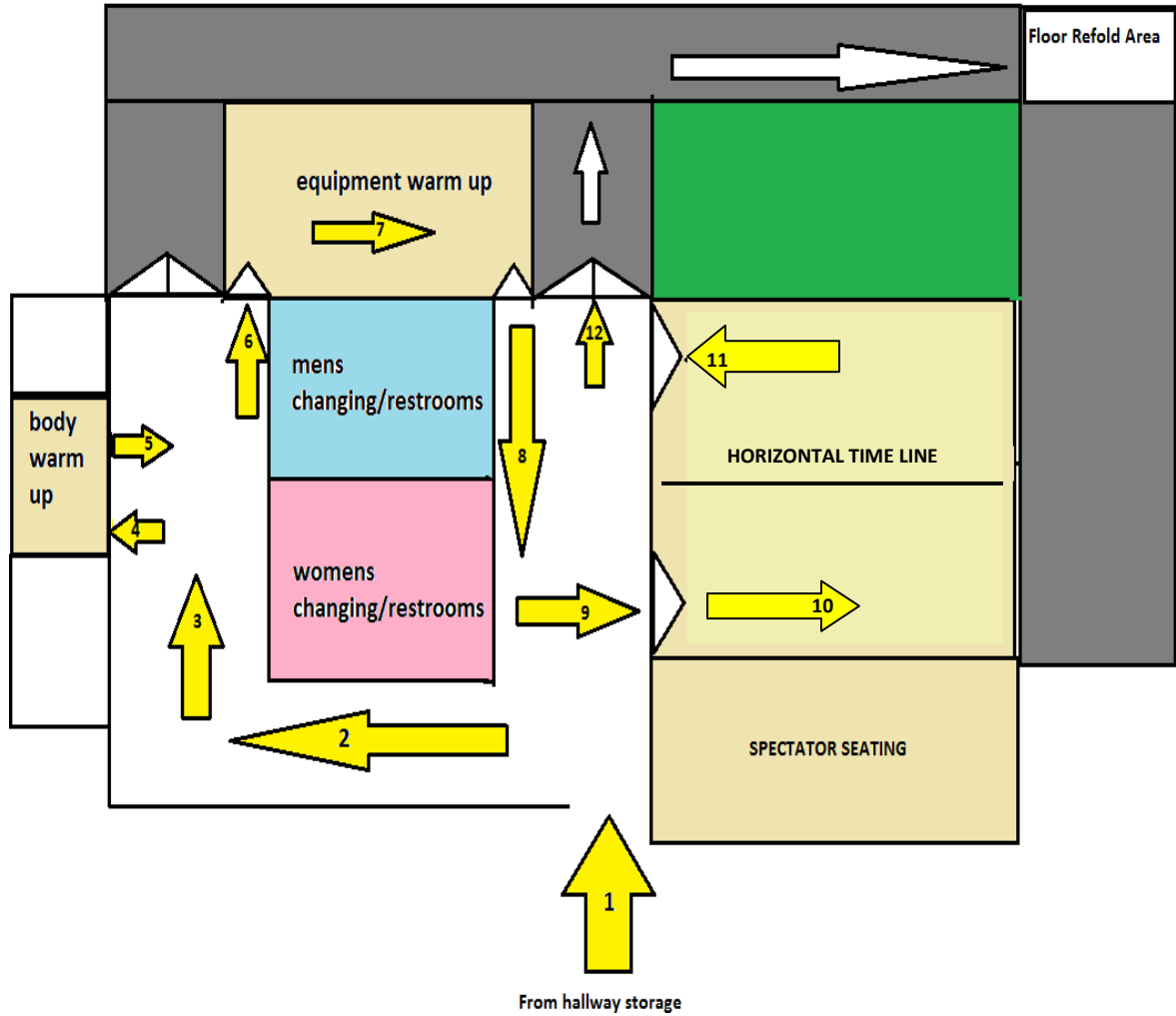
The first aid station will be located in the main hallway steps away from the gym and concession area. Signs will be posted. A nurse or EMT will be available on-call for medical needs. Please contact a Staff Member immediately for first-aid needs so that appropriate action may be taken.

**Chattahoochee High School**

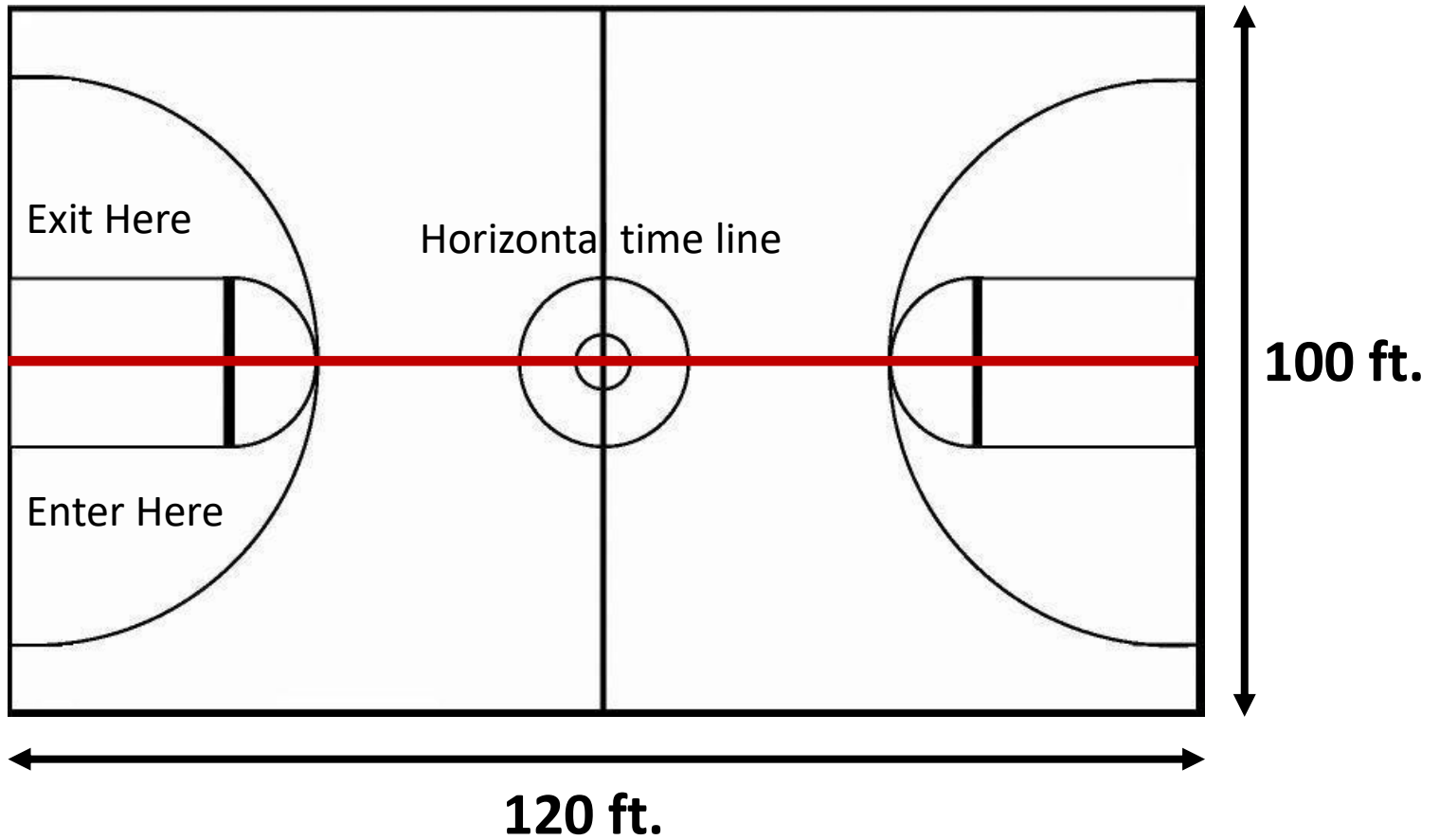


# WELCOME PACKET • March 31, 2018

CHATTAHOOCHEE WINTER MUSIC GAMES  
COLOR GUARD PERFORMER FLOW



# Chattahoochee High School



**No obstructions, overhangs, basketball goals, etc.**