

**KENNESAW MOUNTAIN VISUAL
INVITATIONAL
WELCOME PACKET**



**Saturday, January 16, 2016
Kennesaw Mountain High School
1898 Kennesaw-Due West Road, Kennesaw GA**

WELCOME PACKET • January 16, 2016

WELCOME

Welcome to the Kennesaw Mountain Visual Invitational (KMVI) sponsored by the Kennesaw Mountain High School Winterguard and the Kennesaw Mountain Band Organization (KMBO). We hope you enjoy your time at our event and we wish the best of luck to the units attending our event.

CONTACTS

This WELCOME PACKET should answer most, if not all, of your questions about this event and the KMHS Campus. However, if you need additional information, please feel free to contact one of the following people:

Show Coordinators			
Gretchen Hyde	gretchenolshyde@yahoo.com	404-641-5440	
Jennifer Bryant	Bryant5allgood@gmail.com	678.697.9861	
Annette Lindler	Lindler123@att.net	770-356-6965	
Kennesaw Mountain Band Directors			
David McGrath	david.mcgrath@cobbk12.org	678.594.8190	Ext. 257
Michael Huebner	michael.huebner@cobbk12.org	678.594.8190	Ext. 293
Kennesaw Mountain Guard Director			
Adam Sage	adam.sage@cobbk12.org		

VENDORS

Space is at a premium at our facilities. Therefore, vendor rentals will be *extremely* limited with pricing starting at \$500 per area. Vendors interested in renting a space, should contact the Show Coordinators for details.

MAPS

Maps provided with this packet include:

- Kennesaw, Georgia Location Map
- KMHS Campus Maps and Event Flow Diagrams

PARKING - UNIT AND SPECTATOR

UNIT PARKING FOR BUSES/EQUIPMENT will be located in the **KMHS BUS LOT** (i.e., *the second entrance to the school - NOT the entrance at the stop light.*) Signs will be posted.

SPECTATOR PARKING may be accessed via the **MAIN KMHS ENTRANCE** which is located at the STOP LIGHT. Please proceed with caution through the circle, past the Teacher Parking Lot on the right, turning down the hill towards the gymnasium, where parking spaces are available primarily on the left side of the campus. Signs will be posted.

ADMISSION AND TICKETS

- Admission cost is \$9. Credit card reader will be with a \$1 convenience fee.
- Tickets may be purchased at the entrance to the MAIN GYM (see enclosed map).
- Children under 5 will be admitted free of charge.
- SAPA and GMEA badges will be honored for admission purposes.

WELCOME PACKET • January 16, 2016

SEATING

Seating will be available on a “first come, first serve” basis on the FRONT side of the gym. After their performances, units are asked to sit on the back side of the gym to allow for sufficient spectator seating on the front side of the gym. Spectators will be allowed to enter/exit the gym between unit performances only.

VIDEOTAPING

- Videotaping is STRICTLY PROHIBITED.
- Videotaping will be permitted by a single videographer for the unit to record their performance only.
- All unit videotaping will be done from the designated area only and cannot interfere with the judge’s view.
- Videos cannot be sold from/at any and all SAPA shows.

INCLEMENT WEATHER PROVISIONS

In the event of inclement weather, please go to the Kennesaw Mountain Band Organization website www.kmbo.org for updates on the day of the event. MOST OF OUR CAMPUS IS OUTDOORS. PLEASE TAKE PRECAUTIONS FOR INCLEMENT WEATHER including bringing tarps with you.

HOSPITALITY ROOMS

The Judges’ and Directors/Staff Hospitality Rooms will be located in the FINE ARTS BUILDING adjacent to the SMALL GYM/MAIN GYM for Judges, Directors and adult Staff members with SAPA credentials. Judges’ hospitality will be located in the Teacher’s Lounge, while the Directors and Staff members will have an area in the back corner of the FINE ARTS building.

UNIT CHECK-IN

UNIT CHECK-IN will begin 1 & 1/2 HOURS BEFORE THE FIRST PERFORMANCE TIME on the day of the event in the KMHS 200 COMMONS AREA (1ST ENTRANCE) adjacent to the UNIT/EQUIPMENT PARKING in the KMHS BUS LOT. Signs will be posted accordingly. Please arrive at least 1 hour prior to the scheduled warm-up time.

EQUIPMENT will enter through the 2nd entrance from the KMHS BUS LOT.

Units will need to provide the following at time of registration:

- Number of guard members (Note: Penalties will be assessed for false declarations.)
- Unit Spiel Sheets should be completed on-line prior to the competition.
- Unit members and staff should check in together.

Units will be provided with the following at time of registration:

- Staff/Chaperone passes (7 free; Extras are \$9) Credit card reader is available with a \$1 convenience fee.

Unit Dressing Facilities will be available on-site and should be vacated as soon as possible after performance. Valuable personal items should not be left in the dressing area and are the unit’s responsibility. Personal Storage areas will be provided in the school hallways as assigned upon arrival. IF your unit vacates an area, please let UNIT CHECKIN know so that storage may be adjusted for others.

EQUIPMENT LOADING AND UNLOADING

Equipment unloading and loading will take place near the rear entrance to the gymnasium in designated areas.

- Equipment unloading procedures and routes to/from performance/warm-up areas will be reviewed at registration as last minute changes may be necessary.
- WEATHER PERMITTING, floors and props will be lined up in performance order along the lower level hallway leading into the gymnasium performance area.

WELCOME PACKET • January 16, 2016

- PLEASE BE SURE TO BRING TARPS TO COVER FLOORS/PROPS IN CASE OF INCLEMENT WEATHER.
- Be prepared to have someone with your props and floor at least 15 minutes before your performance.
- Immediately following your performance, please plan to re-load your equipment.
- After loading/unloading, vehicles must be moved to UNIT/EQUIPMENT PARKING in the KMHS BUS LOT.

EQUIPMENT SPECIFICATIONS

Equipment specifications include, but are not limited to, the following:

- The maximum allowable tarp size for any unit is 60' x 90'. The site will have a minimum of 65'x100' to accommodate a "safety zone" of 3' on both sides and back using the minimum competition area of 60'x90'.
- No performers may enter the "safety zone" any time during their performance.
- For the purposes of interpretation, the "competition area" shall measure a minimum of 60'x90' and does not include entry ramps, hallways nor any bleachers or seating area. Units are allowed to utilize the entire designated competition area for their performance.
- Props and equipment, including equipment tips on rifles, pikes and sabers as well as PVC pipes, must be taped and padded such that they will not damage the floor (even if a floor covering is used).
- All props must be in the designated competition area and no equipment choreography should take place outside the competition area.
- Floor carts may be used.
- Performers must wear shoes at all times when not in the competition area. (Note: Penalties will be assessed for violation of this rule.) Any hard-soled shoes must be taped.
- All performers must begin within the designated competition area.
- Inspection will be located in the warm-up area.

PERFORMANCE FACILITY AREAS / GUIDELINES

SOUND TABLE:

- A CD player will be provided for unit use.
- Units may also use an I-pod (or MP3 player) to plug into the SAPA sound system.
- CLEARLY-LABELED PERFORMANCE CDs should be brought to the SOUND TABLE prior to a performance.
- Units should ensure they also have a CLEARLY-LABELED BACK-UP RECORDING.
- A unit representative should stay with the SAPA soundperson during their unit's performance for this event.
- Sound checks should be done prior to the show or, on a limited basis, during breaks.
- Volume is controlled by SAPA.

TIMELINE:

- This event will have a **HORIZONTAL TIME LINE**.
- Units will enter from the TIME LINE audience's upper left side (on the BACK side of the gym) and will exit from the audience's lower left side (on the FRONT side of the gym).

WARM-UP AREAS:

- **BODY WARM-UP** will be located in the **BAND ROOM** in the FINE ARTS BUILDING. Equipment use IS ALLOWED in the Body Warm-Up area; however, NO TOSSING IS ALLOWED.
- **EQUIPMENT WARM-UP** will be located in the **SMALL GYM** adjacent to the MAIN GYM.

FLOOR FOLDING:

- Floor folding will be done outside the performance gym in the KMHS BUS LOT.
- In case of inclement weather, floor folding will be done in the KMHS Cafeteria and/or after the show and/or during breaks.

FIRST AID:

WELCOME PACKET • January 16, 2016

The first aid station will be located in the gym adjacent to the equipment entry area. Signs will be posted. A nurse or EMT will be available on-call for medical needs. Please contact a Staff Member immediately for first-aid needs so that appropriate action may be taken.

TABULATING AND SONGING AREAS

These areas are off limits to everyone except authorized personnel. DO NOT APPROACH THE TABULATION TABLE. CDs may be picked up shortly after a unit performance.

ADDITIONAL INFORMATION

FULL CONCESSIONS WILL BE SOLD OUTSIDE THE GYM IN THE MAIN LOBBY. ITEMS INCLUDE A VARIETY OF CONCESSION FOOD, DRINKS, AND CANDIES, SUCH AS: Chicken Wraps, Hot dogs, Pizza, Chips, Cookies and Baked Goods. Coke Products and waters also available. (CREDIT MACHINE is available for a \$1 convenience fee.)

OTHER ITEMS FOR SALE INCLUDE...

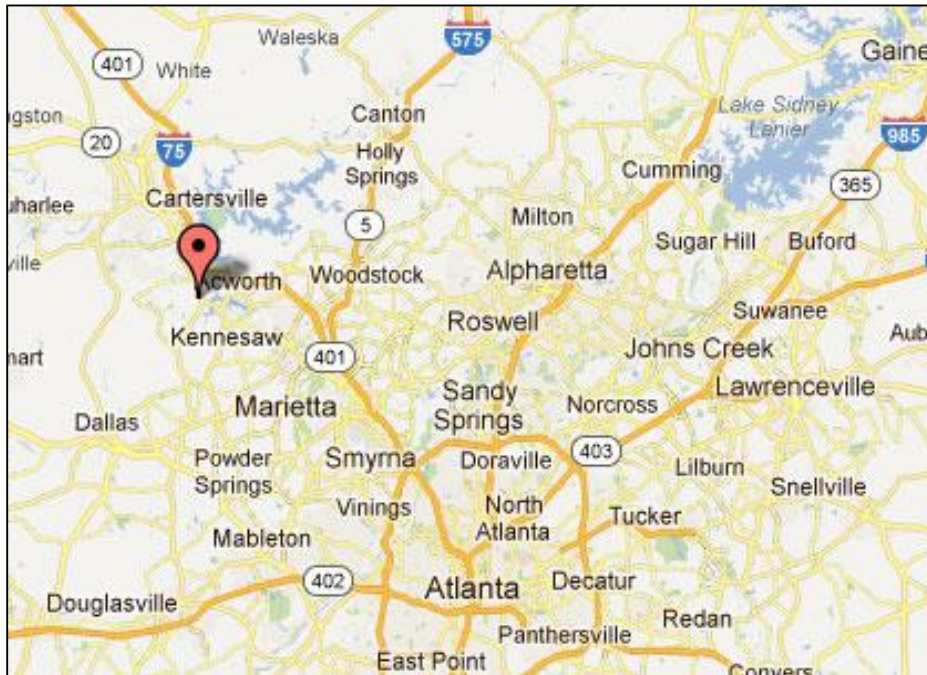
KMVI Winterguard shirt with team names \$15 (Sizes range from Small to XLarge)

Assorted Flags ranging from \$10-\$20 each

COSTUMES ALSO AVAILABLE FOR SALE: Contact Theresa Juback at thejubacks@gmail.com

KENNESAW GEORGIA LOCATION MAP

Kennesaw Georgia
Location Map from I-75



KENNESAW GEORGIA is located
off
I-75 NORTH/SOUTH

Take **EXIT 271 - CHASTAIN ROAD.**

Turn onto **CHASTAIN ROAD (WESTBOUND)**

Note: In approximately 2 miles,
CHASTAIN ROAD becomes
MCCOLLUM PARKWAY.

DIRECTIONS TO THE KMHS CAMPUIS

TURN RIGHT onto N Cobb Pkwy NW/US-41 N

HINTS:

1. *Huddle House is on the right – McCollum Airport is on your left.*
2. *Get into the LEFTMOST RIGHT TURNLANE at the McCollum/US-41 traffic light.*
3. *Once on US-41, get into the left turn lane before the next traffic light which is the intersection with Kennesaw-Due West Road .*

At the first TRAFFIC LIGHT on N Cobb Pkwy NW/US-41 N, **TURN LEFT** onto **KENNESAW DUE WEST RD NW**

HINTS:

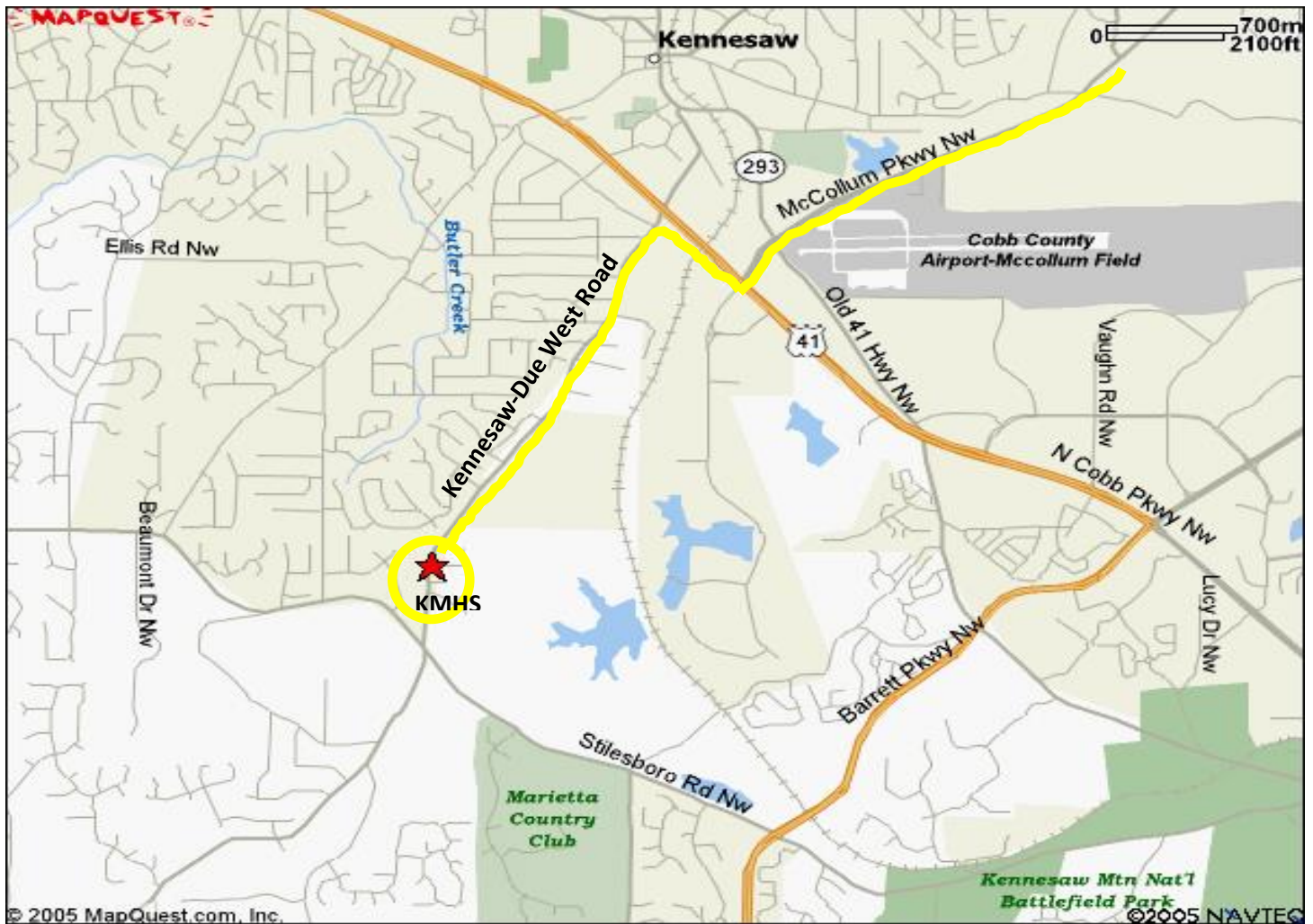
1. *Olde Towne Tavern is on the right.*
2. *A Shell gas station is on the left.*

In 1.2 miles, Kennesaw Mountain High School is located at 1898 KENNESAW DUE WEST RD on the left.

HINTS:

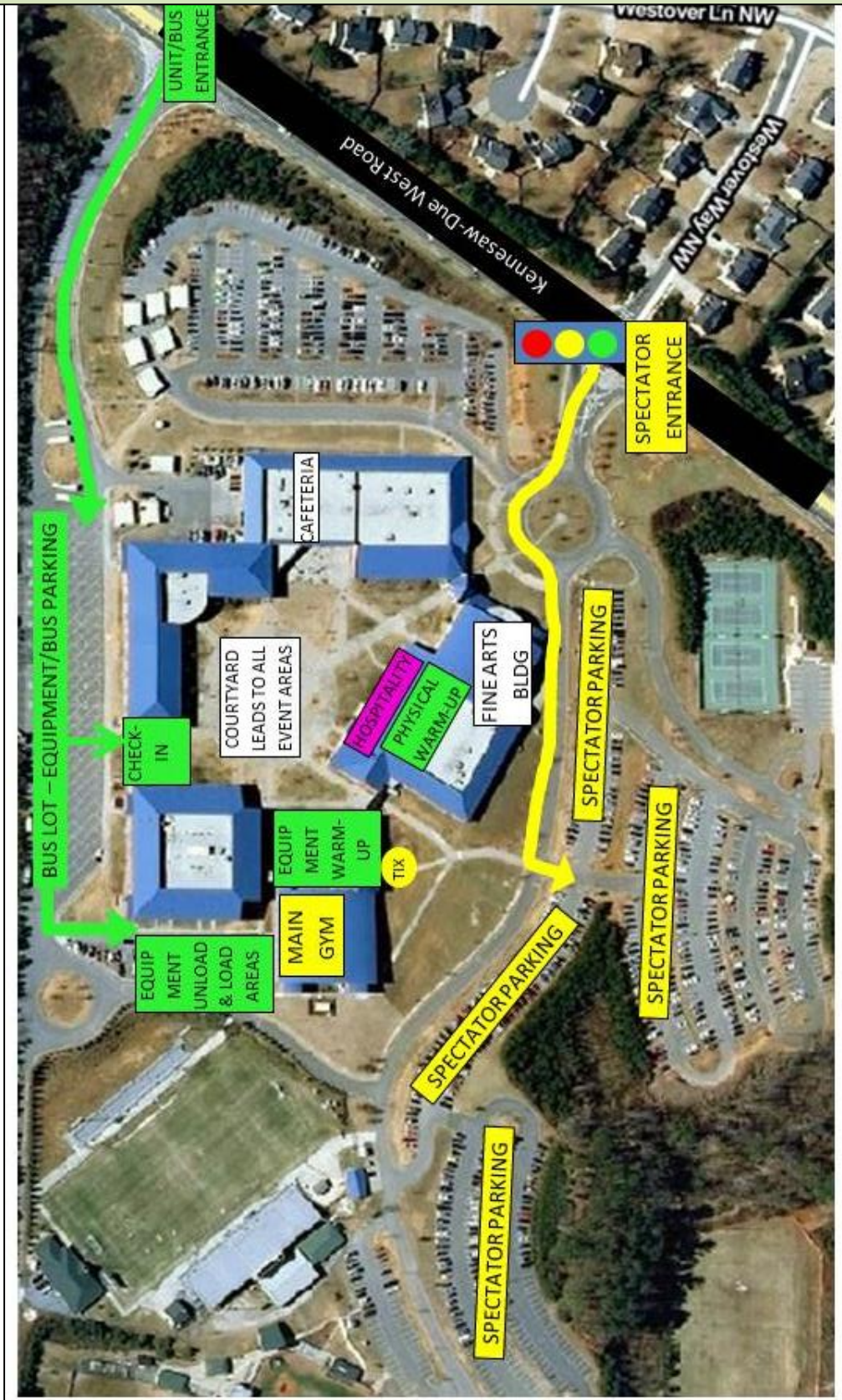
1. *SPECTATOR ENTRANCE is at the TRAFFIC LIGHT.*
2. *EQUIPMENT ENTRANCE is on the LEFT – iust PAST the TRAFFIC*

Directions
to the
Kennesaw
Mountain
High School
Campus from
Chastain Road /
McCollum
Parkway



WELCOME PACKET • January 16, 2016

KMHS CAMPU'S MAP - EVENT FLOW



KMHS CAMPOS MAP - PERFORMANCE AREA FLOW

