



Thank you for attending the  
2020 SAPA Fall Meeting. The meeting  
will begin in a few moments.

Please sign in to our digital attendance sheet:

<https://www.tinyurl.com/20FallMtg>



**2020 Fall Meeting**  
**Sunday, November 15th**

# Attendance Sign In

---



→ Please sign in for the meeting at the link below.

◆ <https://www.tinyurl.com/20FallMtg>

# Agenda

---

- Welcome
- Review of Spring Meeting Minutes
- Discussion about Season
- Financial Discussion
- Q & A
- Closing



# Review of Spring Meeting

---

→ Minutes for Meeting

◆ <https://www.tinyurl.com/SpringMins>



# Discussion

---

- In-Person Contest Information
- Virtual Contest Information
- Performer Safety



# In-Person Contest

---



## → Timing Requirements

- ◆ Interval time for all groups: 10 minutes
- ◆ Adjustments: No minimum performance or equipment time

## → Show Capacity

- ◆ 40 units
- ◆ 30 units during virtual contest weekends

## → SAPA Championships Event Requirement

- ◆ No minimum on regular season events to participate in Championships.

## → COVID Guidelines

- ◆ Refer to document: <https://www.tinyurl.com/2021SAPAGuide>

# Virtual Contest Rules

---



- ➔ Most aspects of virtual competition will follow our current policies for in-person competition
- ➔ Maximum and minimum number of performers same as in-person
- ➔ All classes of competition will be offered
- ➔ Virtual exhibition class for any programs that are unable to adhere to the guidelines listed above but would like to field a group for the 2021 season.
  - ◆ Judges comments provided for exhibition class
  - ◆ No ratings or rankings
- ➔ No time minimums (performance time or equipment time) as consistent with WGI
- ➔ Competition boundaries should be the same as in-person — this includes indoor and outdoor spaces, should a school need to utilize an outdoor space for filming.



# Virtual Contest Rules

---



- ➔ Programs must declare format, virtual or in-person, at the beginning of the season. If a change is needed mid-season, the program will petition for the switch. Petitions will go through steering committee. Administration must sign-off on documentation for a petition to switch formats.
- ➔ Performers cannot participate in more than one group regardless of format.
- ➔ For a full list of all the adjusted guidelines, please see [WGI's Virtual Season Group Rules](#). For example, no new combined schools will be allowed. Programs that competed as a combined school in the 2020 competitive season will be allowed to continue as such in 2021.
- ➔ Promotions will still happen for virtual performances.
- ➔ Championships results will not impact 2022 classification if a team's format changes.
  - ◆ Example: A group that places in the top half of Virtual A-Class may still move down to In-Person Regional A-Class in 2022.

# Virtual Contest Rules



Maximum Performance Times by Category			
Category	Color Guard	Percussion	Winds
JUNIOR	4.5 min	5 min	5 min
REGIONAL A	4.5 min	5 min	5 min
A CLASS	5.5 min	6 min	6 min
OPEN	6.5 min	7 min	7 min
WORLD	7.5 min	8 min	8 min

# Virtual Contest Videoing

---



- All footage must be from one camera and done in one take (preferably hi-cam).
- No spliced footage will be accepted.
- Music can be overlaid.
- Viewpoint should be from an elevated perspective.
- Zooming in or moving camera is not permitted.
- Audio microphone placement is not restricted. Color guards may want to add an audio feed to their recordings.
- Video submission by Thursday before the Saturday competition that the team has registered for. Videos must be uploaded for each show separately. Information on how to upload will come at a later date.
- Use of a more recent performance video for each contest is allowed, but not required.
- The program must own rights to this video (recorded it yourself).

# Virtual Contest Evaluation and Awards

---



- Evaluation will be the same as in-person
- All judges will provide comments, scores, and rankings
- Sheets are the same as in-person
- ONE viewing per judge team per group
- Virtual competes with virtual, in-person with in-person
- All participating groups will receive a “digital award” graphic, which can be distributed to students. This graphic is designed to be placed on a social media platform or to print and frame.

# Financial Discussion

---

- End of 2020 Season
- Planning for the Unknown's of a COVID season
- Risks for 2021



# Staff & Performer Safety

---



*If you have not already, research your school or rehearsal facility, city, county, and national public health recommendations and requirements for disease mitigation.*

- Develop a clear and direct plan to share with performers and families regarding:
  - New procedures for the 2021 season
  - Reporting covid exposure
  - Response plans to covid exposures within the group



# Staff & Performer Safety

## Rehearsal Considerations

- Adjust rehearsal length to limit the need for overnight stays or avoid meal times
- Health screenings upon arrival
- Designated hand-wash times before, during, and after rehearsal
- Avoid shared food or buffet-style settings
- Discontinue hand-holding, high fives, hugs, “bring-it-in” time, etc.
- Face coverings
  - ◆ Practice with masks to prepare for performances
  - ◆ Bloch sells a mask for dancers in natural tones
  - ◆ Mask cages available to hold the mask away from the mouth & nose
- Personal hygiene at the conclusion of rehearsal

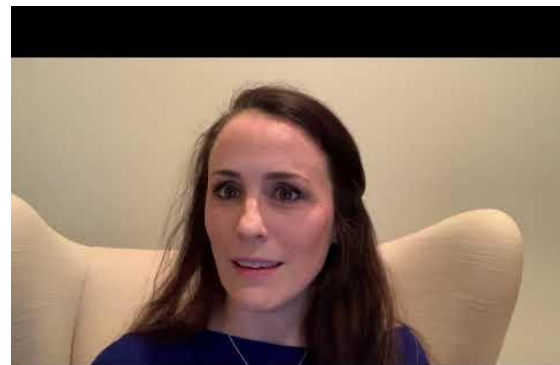


# Staff & Performer Safety



## Rehearsal Considerations continued

- Clean equipment and surfaces between rehearsals
- Allow for 6' of social distance during passive rehearsal time, 10' when actively rehearsing
  - ◆ Limit the number of groups or individuals in your rehearsal space at one time
  - ◆ Create a plan for getting equipment to and from storage so members do not cluster
  - ◆ Taping spots in rehearsal block may help maintain 10' distance in all directions
  - ◆ Staff and volunteers remain outside of the block while teaching or limit time within the performance block
  - ◆ Avoid or modify across the floors
  - ◆ Modify choreography and drill
    - Exclude face touching movements
    - Avoid exchanges of equipment
    - Weight sharing/partnering is discouraged





# Questions from Survey

---



- SAPA Championships will be held in Georgia.
- Locations will be announced as they are confirmed.
- Performers are required to wear masks during their performance.
- Performers must purchase a front side line ticket to watch the show due to capacity tracking.
- There will be a petition process to transition your unit from in-person to virtual classification.
- The question survey is still available to ask questions. You can track your question here: <https://www.tinyurl.com/SAPAQA>

# Q & A

---



- We will take this time to answer any questions that may have been asked in the chat during the meeting.
- If you have any additional questions, please type them in the chat now.
- If you have any unit-specific questions, please place them on the following survey:  
<https://www.tinyurl.com/SAPAQs>



—

**Thank you for your patience and continued support as we develop the 2021 season.**

**We are looking forward to a great season ahead!**