



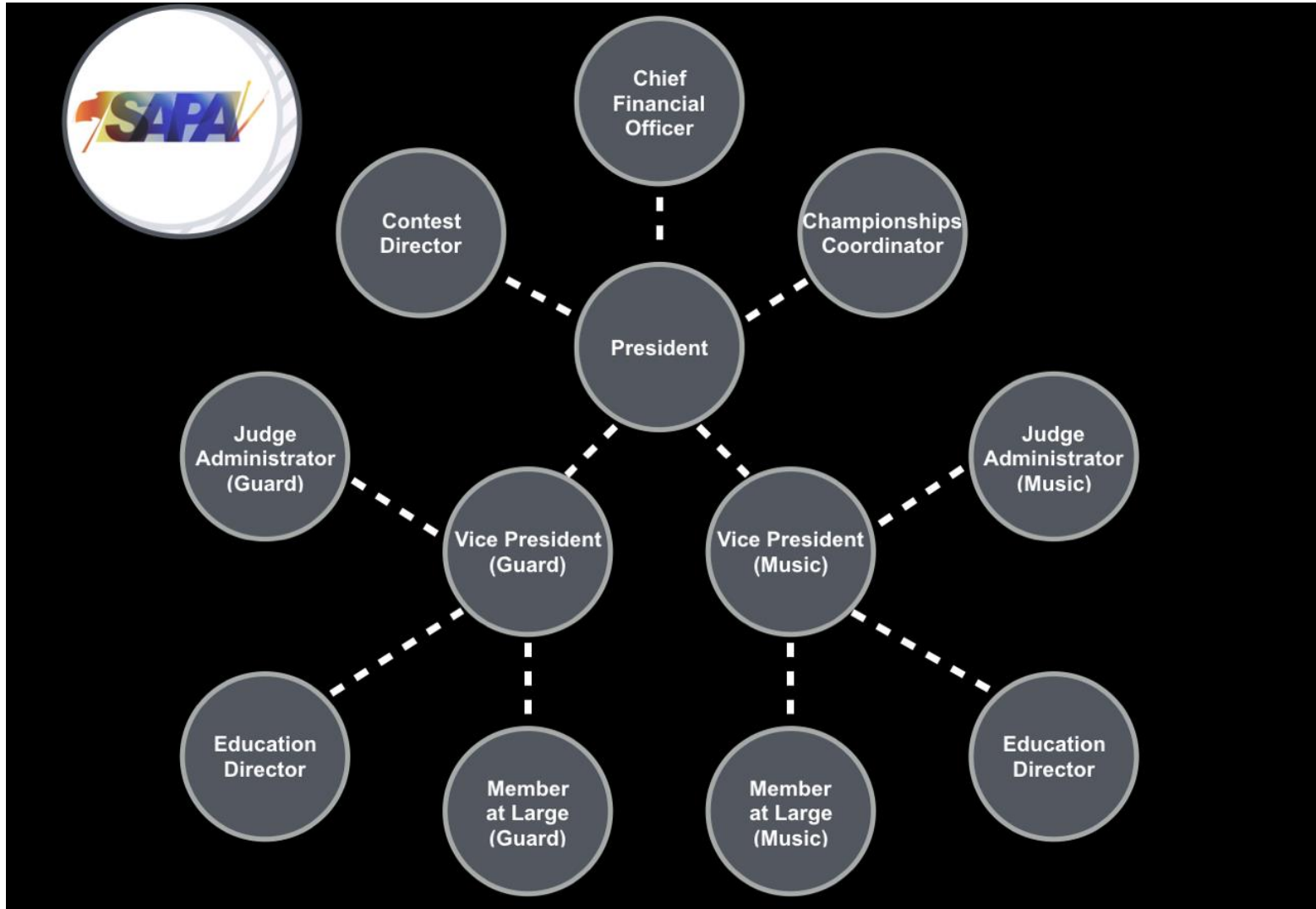
SAPA Colorguard Report

2017

2017 Successes

- Reclassification Process
- Addition of new staff members for Circuit
 - Education Directors
 - Megan Phillips and Rick Subel joined the team in September
 - Judge Administrator
 - Scott Beck joined the team in September

Organizational Chart



SOUTHERN ASSOCIATION FOR
PERFORMANCE ARTS

Reclassification Process

- A 2017 Goal
- The Steering Committee was tasked to focus on sustainable growth of Reclassification this year. There was a new promotion model created that gave a more specific criteria to be promoted.
- **In order for a unit to be promoted to the next class, a unit must achieve a specified total score plus a specified number by the two IA judges + the DA judge.**
 - Took the score system that had been used in years past, the group also had to hit a Box 4 score in 3 of the 5 captions (IA + DA) in order to be promoted.

Education

- Ongoing focus since 2013
- Survey Results from Membership

Instructor--Choreographer	3
Instructor--Technician	5
Unit Director	37

Colorguard	43
Winds	2

Years of Experience	Qty
0-3	6
3-5	5
5-10	18
10-15	9
15+	7
Grand Total	45

Education Survey Feedback

<u>Categories</u>	<u>Qty Voted</u>
Design Tips and Insights	36
Learning New Teaching Skills and Methods	28
Fundraising and Financial Tips and Insights	27
Adjudication Criteria (how contests are judged)	26
Recruiting Tips and Insights for Growing your Program	20
Critique Tips and Insights (how to have more effective critiques with judges)	18
Physically learning New Skills (to better understand and pass along to students)	15
SAPA Policies and Procedures (regarding aspects of unit membership and contests rules)	13
WGI Policies and Procedures (regarding aspects of unit membership and contest rules)	9
Grand Total	192

Education “Days”

- An overview tape created specifically for your students.
- An expanded critique opportunity that offered time to discuss show-specific design at length:
 - Critique 1: A regular rotation with three stations that instructors rotated through at 3-minute intervals. The three stations were Movement, Equipment, and Design Analysis.
 - Critique 2: An educational overview rotation that had three stations with one judge each: either the hired Overview judge or one of the two General Effect judges. In the overview room, directors went to one judge table and spent the entire nine minutes there. During this time, instructors were encouraged to **provide a video of group’s performance** and any materials that might have helped have a productive design conversation with the judge (uniform sketch/flag/floor design, additional music, drill or choreography plans, etc).

Adjudicator Stats

Focus	Summary
Judges (2016)	<ul style="list-style-type: none">• 35 different Judges; 14 of those were WGI Judges and 7 more who are actively designing• 12 judges judged more than 1 time• 6 out of the 8 shows had 2 or more WGI Judges• 5 of the 8 shows had 3 or more WGI and Designer Judges
Judges (2017)	<ul style="list-style-type: none">• 25 different Judges; 9 of those were WGI Judges/8 of those were recent WGI Judges and 9 of the total 25 judges still actively design.• 16 judges judged more than 1 time• 18 Gulf Coast Judges were used this season.• 8 out of the 10 weekend shows had 2 or more current/recent WGI Judges.4 out of the 10 shows had 3 or more current/resent WGI Judges and 3 out of the 10 shows had a Designer Judge

2017 SAPA at WGI Events

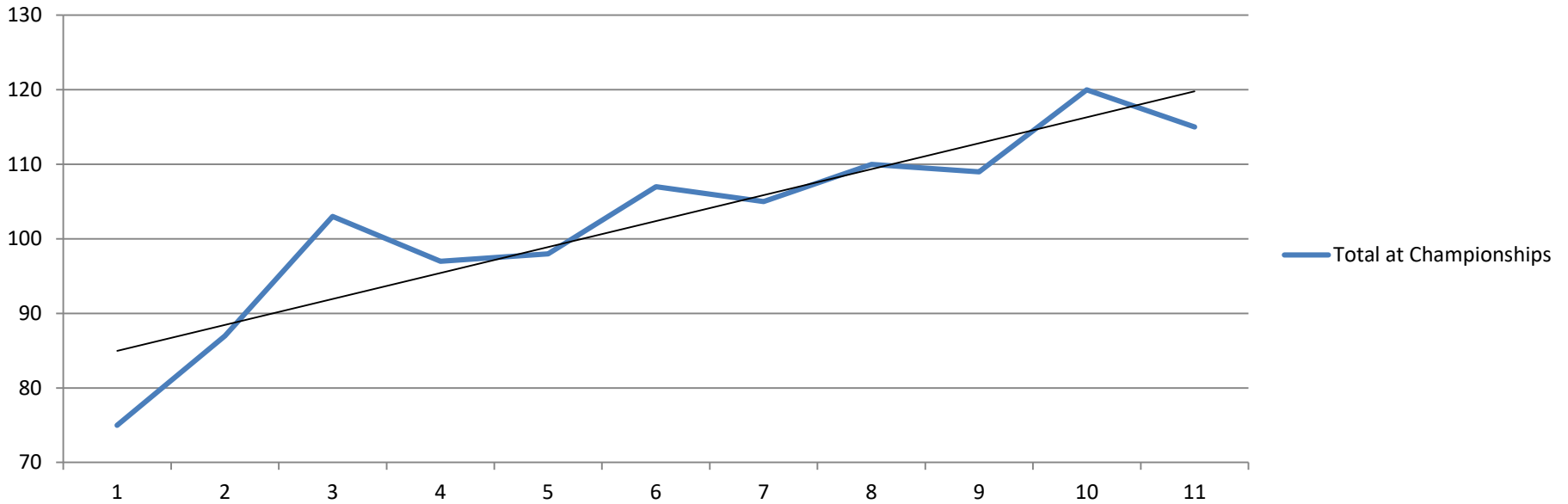
SAPA's Participation at WGI events in 2017	
Event Type	Number of participants from SAPA
WGI Regionals	35 units
WGI Regional Finalists	19 units
WGI World Championships	15 units
WGI World Championship Semifinals	7 units
WGI World Championship Finals	6 units

SAPA Stats- Nationally

Event	Stats
Knoxville Regional (1-day)	6 out of 8 advanced to Finals
Pensacola Regional (1-day)	7 out of 9 advanced to Finals
Atlanta Regional (2-day)	14 out of 30 advanced to Finals
Mid Atlantic Power Regional (2 day)	4 out of 5 advanced to Finals
Mid Atlantic Power Regional (2 day)	4 out of 5 advanced to Finals
WGI Championships	<ul style="list-style-type: none">• 15 attended• 7 advanced to Semi-Finals• 6 advanced to Finals

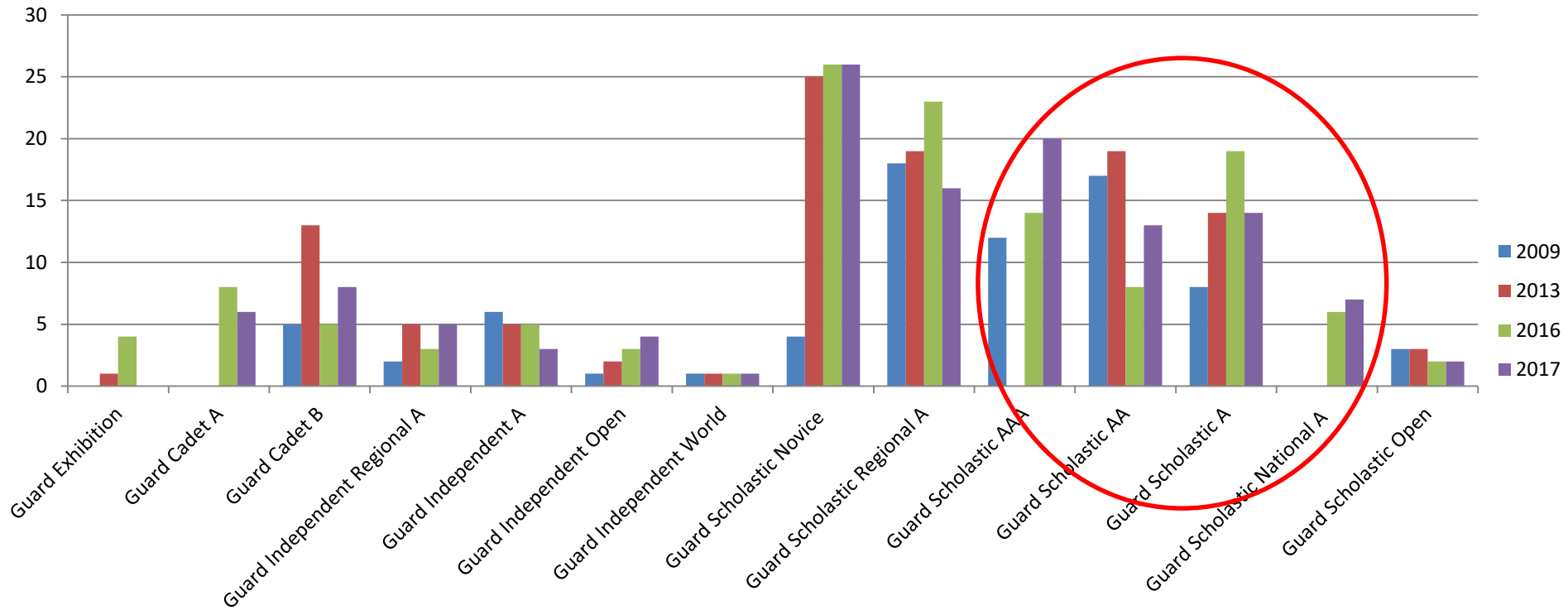
Championships Data

Total Units at Championships

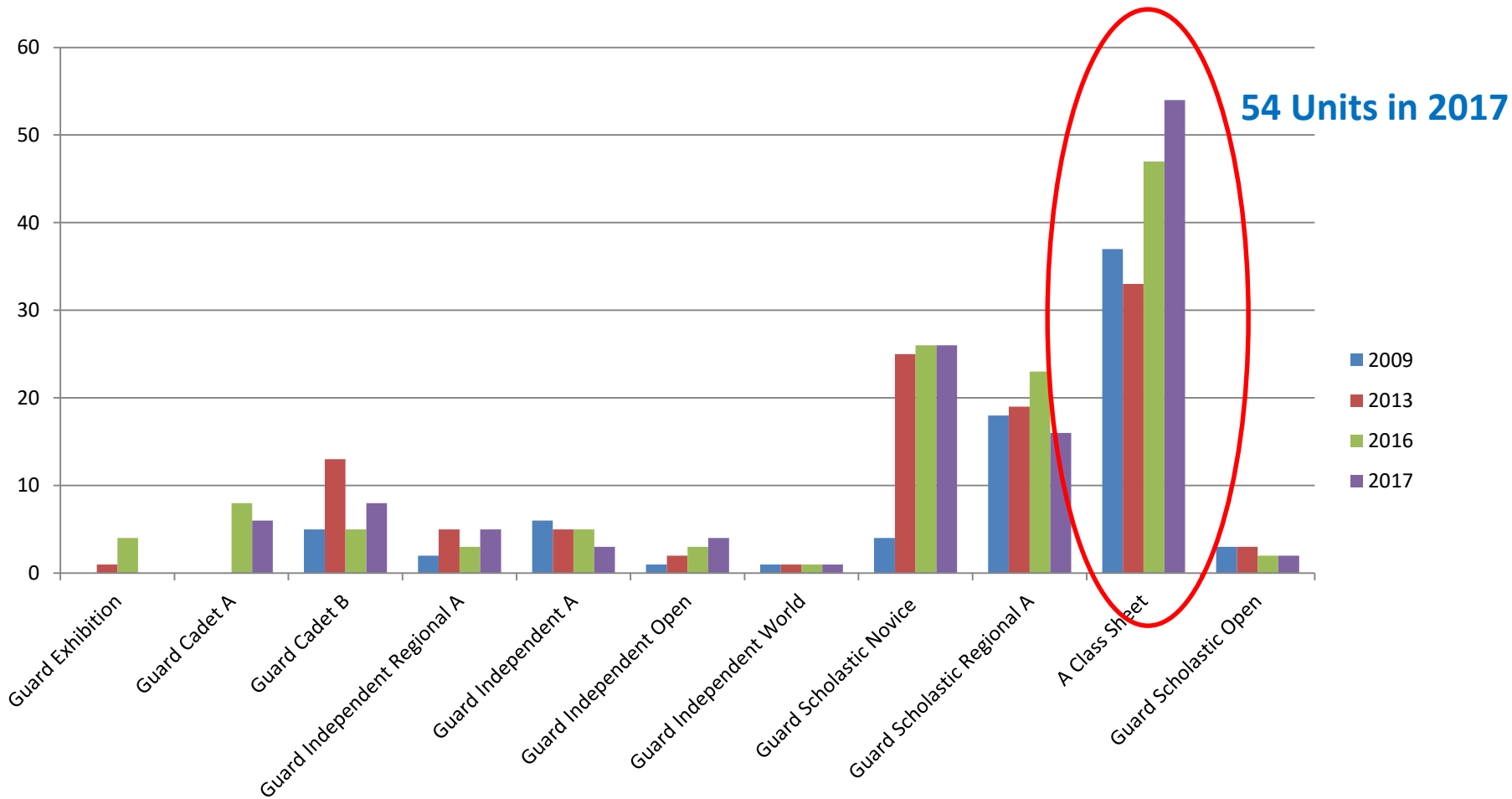


SAPA Color Guard Membership Growth

2009, 2013, 2016, 2017



SAPA Groups on the A Class Sheet



2018 Goals

Focus	Summary
Membership Education Events and Tools	<ul style="list-style-type: none">• Member driven topics• Resources Available to Reference• Additional Overview commentary throughout the season• Steering Committee, Education Director, and Colorguard VP to focus on circuit needs for any additional Educational opportunities• A Class Membership
Judges	<ul style="list-style-type: none">• Develop a committee to focus on circuit needs in this area and how to best achieve those results.• More consistent judging and feedback• Aim to reach goal of 2+ WGI Judges at every show• Bring in Designer types as frequently as possible as either a judge or Overview panel
National Focus	<ul style="list-style-type: none">• Regional Attendance for A classes and above• Championship Attendance for A National Classes and above• Advancement to Semi-Finals or Finals• Focus on “How can SAPA help?” (Staff, Eboard, Committees, etc)

How can I get involved?

- **Attend SAPA events and meetings**
- **Have productive dialogue with different directors/staffs, E-board, Circuit staff, and committee members**
- **Judge evaluation forms**
- **Contest site evaluation forms**
- **Other Survey feedback requests**