

*The West Forsyth Band Boosters welcomes you to our Wolverine Classic at West Forsyth High School. We thank you for attending our event and hope that you have a rewarding experience and enjoy your stay.*

*Admission Prices:* As per the official SAPA admission prices, a one-day ticket will be \$8.00. A two day pass will be \$12.00. Each unit will be allowed to bring **seven** staff people into the show in addition to the marching members. Additional passes may be purchased at check-in. SAPA badges will be honored for circuit members. Wrist bands are required for all spectators, guard members, all staff, as well as for equipment crew and chaperones.

*Seating:* Spectators will sit to the left of the spectator entrance. Performers are required to sit on the opposite side of the gym. Performers are encouraged to support all units.

*Parking:* Spectator parking will be in the lot located in front and side of the gym by access from Kelly Mill Rd (see directions). May access from Drew Rd. signs will be posted.

*Unit & Equipment Check In:* Unit check in, as shown on enclosed map, is located in the front of the school by access from Drew Rd. . Unit check in signs will be posted. Be prepared to declare the number of marching members. Penalties will be assessed for false declarations. **MUST** have spiel sheets filled out! Marching members and **seven** staff will be admitted. Additional staff must purchase tickets; no one including equipment crew or chaperone's will be admitted to the gym without a wristband. Units must check in one hour prior to performance time. **Guard members and staff must check in together.** Equipment drop-off and parking will also be in front of the school by access from Drew Rd. ( see directions). **Must have wristband to enter at this entrance NO exceptions. Parking for unit trailers and buses will be the parking lot at the front of school.**

*Equipment Unloading:* Equipment will be unloaded at the front of the school on Drew Rd. Tarps and props will be stored in the hallway on the lower level , a volunteer will have your equipment ready prior to your performance at equipment warm up. Please be prepared to have someone with your equipment at this time. You will be allowed to unload your equipment one hour prior to your performance and must reload as soon as performance is over.

*Overnight Housing:* We will be offering housing **on-site** for a charge of **\$3.00** per competing member for one night. Housing contracts and waivers in this packet should be emailed to Sharon Strickland at [stricklandsharon@bellsouth.net](mailto:stricklandsharon@bellsouth.net) to make reservations. Units with reservations will be provided a room at unit check in once payment has been received.

**Cooking is not allowed in any of the classrooms or cafeteria.** We ask that you keep your area clean and place all trash in trash cans (see enclosed forms). No eating or drinking allowed in housing area.

*Practice Time:* The cost is \$20.00 per half hour. Units making housing and practice arrangements must settle their financial responsibilities at the unit check in when arriving at the show. Any unit with unsettled bills will not be allowed to compete. Practice time is on a first come first served basis Saturday night after the competition ends and Saturday morning before the competition begins. Practice time will be scheduled through Sharon Strickland at [stricklandsharon@bellsouth.net](mailto:stricklandsharon@bellsouth.net) (see enclosed practice form).

*Dressing Facilities:* Available on site - please vacate ASAP after performance. Please do not leave valuable personal items in dressing area. Please leave dressing area clean and neat. Lockers rooms with showers will be available on the lower level hallway behind the gym (See map).

*Equipment Protection and footwear.* The maximum allowable tarp size for any unit is 50' X 90'. All equipment tips on rifles, pikes, and sabers must be padded and taped; this includes PVC pipes. Any props used must be protected so as not to damage the floor. Soft-soled shoes need no added protection. Hard-soled shoes must be taped. Performers **MUST** wear shoes at all times when NOT in the competition area. Penalties will be assessed for violation of this rule.

*Inspection:* Located in warm up area.

*Tabulating and Judging Area:* Please do not enter either area or communicate with judges. Performance tapes will be available after your performance at a table adjacent to the tabulation/judging area. Score sheets and recaps can be picked up after the show in the tabulation area.

*Sound Table:* A sound system will be provided by SAPA with mixing board, variable speed CD player, amplifier, etc. Bring music tapes and Cd's to the sound table prior to your performance. Make sure tapes are cued in the proper place. A representative should stay with the SAPA sound person during your performance. You should have a clearly labeled back-up recording. Sound checks should be done prior to the show or, on a limited basis, during breaks and will take place at the sound table. Volume is controlled by SAPA.

*Time Line:* Vertical Time Line

*Floor :* The maximum allowable tarp size for any unit is 60' X 90'.

*Warm-Up area:* **Body warm-up** will be in the Auditorium, you may spin but no tossing, see enclosed map for location. **Equipment warm-up** will be in the cafeteria, an ipod docking station will be available for music, see map for location. **SPINNING IS NOT ALLOWED ELSEWHERE IN THE BUILDING.**

**Percussion warm up will be held outside in the parking lot outside band room hallway.**

*Floor Refolding:* Floor refolding will be done in the small gym located next to the main gym.

*First Aid* is located on the top floor in the performance gym. (See enclosed map).

*Hospitality* will be located in room 1551, Judges conference room will be room 1517

*Concessions:* Concessions is located outside the gym on the top floor next to spectator entrance. The concession stand will be open both days. Saturday- Lunch and dinner will be available until 15 minutes after retreat. Sunday- breakfast and lunch will be available. If you would like to pre-order breakfast for your unit please contact Sharon Strickland at 770-500-2087 or [stricklandsharon@bellsouth.net](mailto:stricklandsharon@bellsouth.net).

*Score Sheets and Recap* can be picked up after the show at the tab table.

*Critique:* Contest Director will determine the details. The media center will serve as the critique room as well as the Directors' Room.

*Video Taping:* Due to copyright restrictions. **NO ONE NOT EVEN THE CONTEST SPONSOR** is to videotape any part of the contest, except a unit videotaping **THEIR OWN** program. There will be video passes provided for each unit at check-in. Due to copyright restrictions, there is **NO** selling of contest videos.

*Vendor Sales Costs:*

Competing units – \$25.00

Non Competing Units & Commercial Vendors will be charged up to \$200.00. Contact Sharon Strickland at [stricklandsharon@bellsouth.net](mailto:stricklandsharon@bellsouth.net)

*Emergency Contact: Sharon Strickland*

770-888-3470 x 331420

*Event Coordinator:* Please direct any questions you may have to our event coordinator, Sharon Strickland at [stricklandsharon@bellsouth.net](mailto:stricklandsharon@bellsouth.net) or call 678-947-5462 (home), or 770-500-2087 (c).

*Once again, welcome to West Forsyth High School. We hope our contest meets your expectations in every way.*

*Best regards,*

*Sharon Strickland*

*2010 Wolverine Classis, Coordinator*

**The following maps and directions are enclosed in our packet:**

Driving directions, West Forsyth facilities map, and floor area.

# **Directions to WEST FORSYTH High School**

West Forsyth High School

4155 Drew Rd

Cumming GA 30040

## **From Interstate 575**

Take 575 to Exit 19 A Canton/Cumming (hwy 20). Take Right off of exit. Travel 15.5 miles to Post Rd (stop light), take a right travel 2 miles and turn left on Drew Rd., .4 mile is school. From this direction 1<sup>st</sup> entrance will be equipment and unit drop off. 2<sup>nd</sup> entrance may also be used to access spectator parking. Flow sign will be posted.

## **From Georgia 400 going North**

Take exit 13. Take left off of exit crossing over bridge through stop lights. Travel approximately 4.3 miles to Drew Rd, take sharp left. Travel .9 miles. From this direction 1<sup>st</sup> entrance you may access spectator parking . 2<sup>nd</sup> entrance is equipment and unit check in. Flow signs will be posted.

*Practice Site contract  
Wolverine Classic*

Unit name \_\_\_\_\_

name of contact \_\_\_\_\_

person to receive correspondence \_\_\_\_\_

Address \_\_\_\_\_

City, State, zip \_\_\_\_\_

email \_\_\_\_\_

We would like to contract for hours of practice time as follows:

prefer time \_\_\_\_\_ between \_\_\_\_\_ and \_\_\_\_\_  
date

prefer time \_\_\_\_\_ between \_\_\_\_\_ and \_\_\_\_\_  
date

We understand the cost for practice to be \$20.00 per half hour. We also understand that if the contracted times are not used or needed, then we will be obligated for the full price of the time contracted UNLESS suitable arrangements can be made with the contest sponsor PRIOR to the time assigned. The owed amount will be paid at the unit check in prior to competing.

Makes checks payable to : WFBB

signature \_\_\_\_\_

position \_\_\_\_\_

Contact: Sharon Strickland at [stricklandsharon@bellsouth.net](mailto:stricklandsharon@bellsouth.net)



*Housing Waiver  
Wolverine Classic  
February 27<sup>th</sup> & 28<sup>th</sup>*

Participating guard/drum line \_\_\_\_\_

As director of the above referenced winter guard/drum line, I take full responsibility for any damages caused by, or injuries involving students, member, staff, and chaperone's for our unit. As guests of West Forsyth High School, we agree to be liable for loss or damage to equipment or facilities on our assigned areas brought about by unauthorized use, damage or alteration by any representatives of our organization. I understand that my unit will not be permitted to participate on later shows until any substantiated claims for loss or damage have been settled

My unit, my unit's representatives and I will ensure that all trash is removed from areas assigned for our uses and will be placed in designated receptacles or bags prior to our departure from the on site overnight location.

I further acknowledge that abusive language or behavior, incidents of vandalism or other abuse of the facilities attributed to representatives of my unit may result in disqualification from this or future contest.

I also agree that West Forsyth High School, the Southern Association of performing Arts will not be held liable for any articles lost or stolen from my group while we are the WFHS campus.

During our stay, I certify that (1) MY MEMBERS WILL BE UNDER ADULT SUPERVISION AT ALL TIMES (2) THAT NO EATING OR DRINKING WILL TAKE PLACE WITHIN THE CLASSROOMS OR HALL AREAS OUTSIDE OF CLASSROOMS, (3) THAT NO ONE IN MY GROUP WILL SMOKE ON THE WFHS CAMPUS (4) THAT OUR MEMBERS WILL RESTRICT THEIR MOVEMENT ON THE WFHS CAMPUS TO AREAS DESIGNATED BY WEST FORSYTH BAND BOOSTER PARENTS AND SAPA OFFICIALS FOR THE CONDUCT OF THE CONTEST AND SAFE ACCOMODATIONS OF PARTICIPANTS AND SPACTATORS

\_\_\_\_\_  
DATE

\_\_\_\_\_  
signature of director

\_\_\_\_\_  
director's printed name

# MENU

Tanner's Pulled Pork Sandwiches

Tanner's Chicken Tenders

Pizza Hut Pepperoni Pizza

Pizza Hut Cheese Pizza

Homemade Grilled Cheese

With

Nachos with Cheese and/or Chili

Frito Chili Pie

Popcorn

Chips

Cotton Candy

Candy

Yogurt

Fruit

Beverages

Starbuck's Coffee, Sweet Tea, Hot Chocolate

Pepsi, Dr. Pepper, Mountain Dew, Diet Pepsi, Diet Dr. Pepper, Sierra Mist,

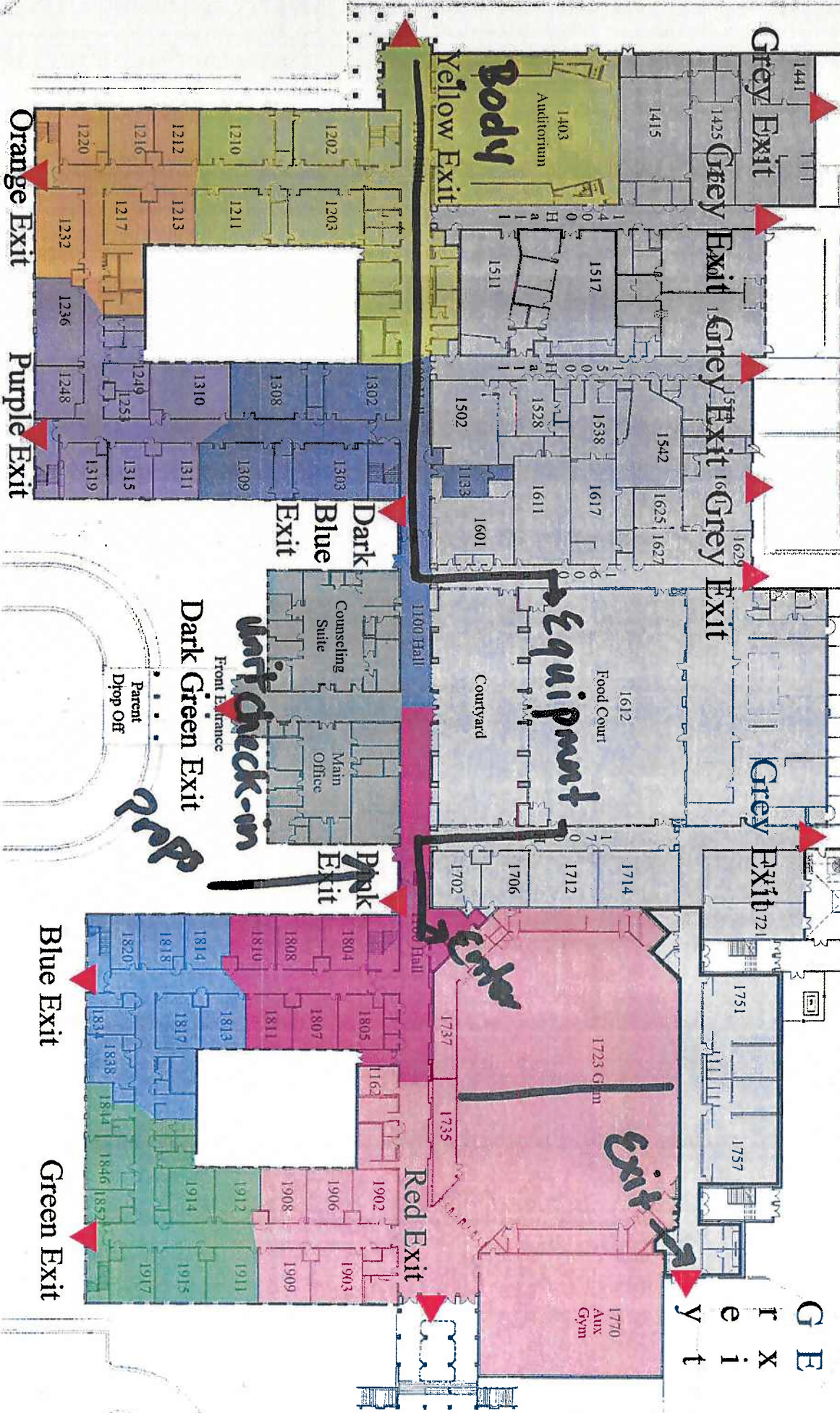
Energy Drinks and Gatorade

**Water**

# West Forsyth High School

## Lower Level

### FIRE ESCAPE PLAN



**Yellow Body**

**Equipment**

**Unit check-in**

**Exit**

GREY  
EXIT

Orange Exit

Purple Exit

Dark Blue Exit

Dark Green Exit

Blue Exit

Green Exit

Red Exit

